



ICELAND

CATALOG 2025/2026



Iceland it's not for everyone.

It's not for those who go where everyone else goes.

It's not for the conservative traveler.

It's for those who travel the world to experience something different, to come back with stories to tell and secrets to share.

The stories of Iceland don't stop as winter comes. Every season, and in every region, Iceland offers secrets to the adventurous and enlightened traveler.

So Iceland welcomes all those who travel with the spirit of adventure, exploring and creativity.

It may not be the first place you think of traveling to but it'll be the last place you will ever forget about visiting.

COME AND BE INPIRED BY ICELAND!



GENERAL INFORMATION ABOUT ICELAND

Iceland is a country of extreme geological contrasts. Widely known as “the land of fire and ice” Iceland is home to some of the largest glaciers in Europe, and some of the world’s most active volcanoes. Iceland is also the land of light and darkness. Long summer days with near 24-hours of sunshine are offset by short winter days with only a few hours of daylight.

The population of Iceland is 360,000. The capital is Reykjavík. The largest municipalities are Reykjavík* (130,000), Kópavogur* (36,000), Hafnarfjörður* (30,000), Akureyri (19,000) and Reykjaneshöfn (18,000).

The flag is blue with a red cross outlined in white. The colours are symbolic for Iceland: Red represents the volcanic fires, white recalls the snow and glaciers, and blue is for the skies above, the sea and the mountains.

The size is 103,000 km² (40,000 sq. miles) and the highest point is Hvannadalshnjúkur peak at 2,110 m. the currency is the Icelandic Króna (plural Krónur) – ISK and the government is parliamentary constitutional republic. The main natural resources are fish, hydro-power and geothermal energy.

* cities located in the capital’s metropolitan area

SAFE AND RESPONSIBLE TRAVEL IN ICELAND

The Icelandic nature is the main attraction for tourists that come to Iceland. We want to make sure that our visitors know how to help us preserve it and how to enjoy it in a safe manner. Here <https://safetravel.is/> you can find information about Safe Travel which is the official source for safe adventure in Iceland.

PASSPORT AND VISA REGULATIONS

Iceland is an associate member of the Schengen Agreement, which exempts travellers from personal border controls between 26 EU countries. For residents outside the Schengen area, a valid passport is required for at least three months beyond date of entry. For information on passport and visa requirements as well as the Schengen area regulations, visit the website of the Icelandic Directorate of Immigration.

LANGUAGE

Icelandic is the national language. English is spoken widely and Danish is the third language taught in schools.

MEDICAL ATTENTION

Pharmacies are called “Apótek” and are open during normal business hours. Only a few are open at night. Medical Care can be obtained by visiting a Health Care Centre, called “Heilsugæslustöð” in Icelandic, during opening hours. For information, call +354-585-1300 or visit the website about Health Care https://www.island.is/en/health/health_service/healthcare. Medical help: There is a medical centre or hospital in all major cities and towns in Iceland. The emergency phone number (24 hours) in Iceland is 112. Health insurance: Citizens of EEA countries must bring their EHIC card (European Health Insurance Card), otherwise they will be charged in full. Non-EEA citizens are not covered by the EEA regulations and will be charged in full. For further information, contact the Icelandic Health Insurance <https://www.sjukra.is/english>.

Tel.: +354-515-0100. Office hours: 10:00–15:00. Special vaccinations are not required to enter Iceland.

EMERGENCY PHONE NUMBERS

Emergency Number: 112 Police: 444 1000 Medical Assistance: 1770

USEFUL WEBSITES: SAFETRAVEL <https://safetravel.is> ICELAND MET OFFICE: <https://en.vedur.is>

ROAD CONDITIONS AND WEATHER: <http://www.road.is> POST OFFICE: <https://www.postur.is/en>



INDEX

GENERAL INFORMATION	01
CALENDAR	04
WHOLE YEAR	05
VIKINGS SAGAS ROUTE	07
FROM ICE TO FIRE	08
SUPER JEEP DAY TOURS	09
SUMMER	15
DAY TOURS/CRUISE SHIPS	17
SOUTH: BEYOND THE WALL	21
DISCOVERING ICELAND	23
SILVER ICELAND CIRCUIT	25
WESTERN MAGICAL CIRCUIT	26
DIAMOND ICELAND CIRCUIT	27
ICELAND TOTAL	29
IN THE ROUTE OF THE GEOTHERMAL SPRINGS	31
WINTER	33
BUS DAY TOURS	35
YULE LADS AND THE NOTHERN LIGHTS	37
NEW YEAR IN ICELAND	39
MAGICAL WINTER IN ICELAND	41
DISCOVERING THE NOTHERN LIGHTS	43
MAGICAL ICELAND: SKING	45
GREENLAND	47
ACTIVITIES	53
ICE TOURISM TEAM	65
GENERAL CONDITIONS	66

2026 CALENDAR



Commissionable package prices for travel agencies and tour operators| Optionals and Extras are NET prices
Each and every one of our packages/services has a personalized service | differentiated and in English
It is possible to remove or add extra days to our packages/programs. For this purpose, request a budget
We organize customised trips - Tailor-made for groups and individuals. For this purpose, request a budget

ATTENTION: The Summer packages/programmes, from June 15 to August 15, should be booked as early as possible (up to 6 weeks before the clients arrival in Iceland). If the booking for the period from 15 June to 15 August is made less than 4 weeks before the date of the clients' arrival in Iceland, the presented prices may change.

JANUARY

S	M	T	W	T	F	S
			1	2	3	4
5	6	7	8	9	10	11
12	13	14	15	16	17	18
19	20	21	22	23	24	25
26	27	28	29	30	31	

FEBRUARY

S	M	T	W	T	F	S
						1
2	3	4	5	6	7	8
9	10	11	12	13	14	15
16	17	18	19	20	21	22
23	24	25	26	27	28	

MARCH

S	M	T	W	T	F	S
						1
2	3	4	5	6	7	8
9	10	11	12	13	14	15
16	17	18	19	20	21	22
23	24	25	26	27	28	29
30	31					

APRIL

S	M	T	W	T	F	S
			1	2	3	4
5	6	7	8	9	10	11
12	13	14	15	16	17	18
19	20	21	22	23	24	25
26	27	28	29	30		

MAY

S	M	T	W	T	F	S
						1
2	3	4	5	6	7	8
9	10	11	12	13	14	15
16	17	18	19	20	21	22
23	24	25	26	27	28	29
30	31					

JUNE

S	M	T	W	T	F	S
						1
2	3	4	5	6	7	8
9	10	11	12	13	14	15
16	17	18	19	20	21	22
23	24	25	26	27	28	29
30	31					

JULY

S	M	T	W	T	F	S
			1	2	3	4
5	6	7	8	9	10	11
12	13	14	15	16	17	18
19	20	21	22	23	24	25
26	27	28	29	30	31	

AUGUST

S	M	T	W	T	F	S
						1
2	3	4	5	6	7	8
9	10	11	12	13	14	15
16	17	18	19	20	21	22
23	24	25	26	27	28	29
30	31					

SEPTEMBER

S	M	T	W	T	F	S
			1	2	3	4
5	6	7	8	9	10	11
12	13	14	15	16	17	18
19	20	21	22	23	24	25
26	27	28	29	30		

OCTOBER

S	M	T	W	T	F	S
						1
2	3	4	5	6	7	8
9	10	11	12	13	14	15
16	17	18	19	20	21	22
23	24	25	26	27	28	29
30	31					

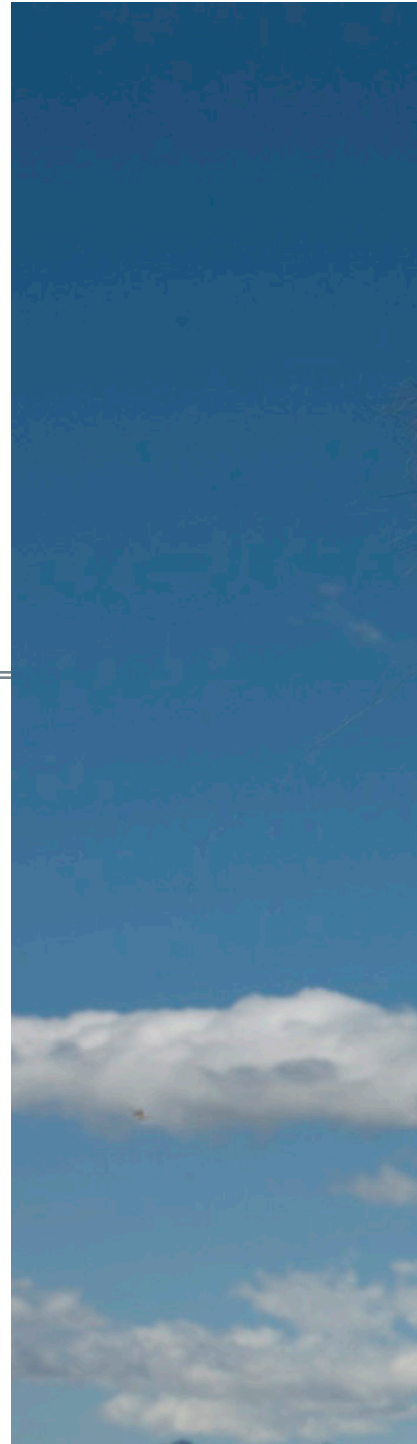
NOVEMBER

S	M	T	W	T	F	S
						1
2	3	4	5	6	7	8
9	10	11	12	13	14	15
16	17	18	19	20	21	22
23	24	25	26	27	28	29
30						

DECEMBER

S	M	T	W	T	F	S
			1	2	3	4
5	6	7	8	9	10	11
12	13	14	15	16	17	18
19	20	21	22	23	24	25
26	27	28	29	30	31	

WHOLE YEAR





VIKINGS SAGAS ROUTE

Reykjavík and Southwest

5 Days · 4 Nights

PRIVATE DRIVER GUIDE INCLUDED:

Welcome at the airport by the driver-guide;
Driver-guide in English (from the arrival to the departure check-in);
Car for the whole trip (to be selected);
Basic car insurance – Collision Damage Waiver;
Super CDW Insurance and Gravel protection;
Fuel for the whole trip;
Hotel regime B&B regimen - typology to be selected;
Folder with brochures, programmes and maps;

SELF & DRIVE INCLUDED:

Pickup of the car at the airport;
B&B accommodations - typology to be selected;
Car - to be selected (pick up at the airport on arrival and delivery in Reykjavík on day 4);
Basic car insurance – CDW;
Transfer from the rental car to the accommodation point on day 4;
Transfer by bus from the hotel to the airport on day 5;
Folder with brochures and big map with the underlined circuit, overnight places and stop suggestions;
Mobile phone tracking (whatsapp) between the client and the local agent in Iceland;

Day 1 · Arrival to Keflavík airport · Reykjavík

Welcome to the airport. Delivery of the car, folder, brochures and map with the underlined circuit.

Day 2 · Reykjavík · City Tour (4h approx.) · Blue Lagoon · Reykjavík

City tour in the capital. Highlights to the Höfði house, Sólfarid, Hallgrímskirkja and the Lutheran Cathedral of Reykjavík, Tjörn lake, National Museum and Perlan Museum. During the afternoon, a trip to the Blue Lagoon, going through the lunar lava fields of Reykjanes. The Blue Lagoon is an open-air geothermal pool which springs from the inside of the Earth between 38°C and 40°C.

Day 3 · Reykjavík · Golden Circle (8h approx.) · Reykjavík

Trip through the Golden Circle, the oldest day tour of the island. Visit to the Thingvellir National Park, to see the oldest parliament in the world, admire the natural beauty and put a foot in Europe and the other in America in the separation of both tectonic plates. Next, Geysir Park, which showed these phenomena to the world and where the Strokkur geyser expels hot water over 35 meters high. Visit to Gulfoss waterfall.

Day 4 · Reykjavík · South Coast (9h approx.) · Reykjavík

Stop at the Skógafoss and Seljalandsfoss waterfalls and the Eyjafjallajökull glacier, which named the volcano that stopped aerial traffic in Europe in 2010. We pass by Myrdalsjökull and visit the Dyrhólaey Natural Reserve. In Vík, walk through the famous black sand beaches and see the 3 rocks of



Reynisdrangur (the legend says that the rocks are actually petrified trolls).

Day 5 · Reykjavík · Departure from Keflavík airport

*Any changes to the programmes due to weather conditions or other force majeure will be safeguarded.

FROM ICE TO FIRE

Reykjavík, South and Southeast

6 Days · 5 Nights



Day 1 · Arrival to Keflavík airport · Reykjavík

Welcome to the airport. Delivery of the car, folder, brochures and map with the underlined circuit.

Day 2 · Reykjavík · Vík

Trip through the south coast, passing by Seljalandsfoss and Skógafoss waterfalls, Eyjafjallajökull and Myrdalsjökull glaciers and Dyrhólaey Natural Reserve. In Vík, take a look at the 3 rocks of Reynisdrangur.

Day 3 · Vík · Jokulsárlón · Skaftafell/ Kirkjubaerklaustrur

Trip to Vatnajökull, the biggest glacier in Europe and to the Jokulsárlón glacier lagoon. Visit to Skaftafell natural park, Skeidararsandur and Eldhraun lava fields covered with Icelandic moss.

Day 4 · Skaftafell/Kirkjubaerklaustrur · Reykjavík

Visit the geyser park and Gulfoss waterfall, symbol of Iceland. Visit to the Thingvellir National Park, to see the oldest parliament

in the world, admire the natural beauty and put a foot in Europe and the other in America in the separation of both tectonic plates.

Day 5 · Reykjavík · Blue lagoon · Reykjavík

Visit the capital and Blue Lagoon, an open-air, geothermal pool which springs from the inside of the Earth from 38°C to 40°C.

Day 6 · Departure from Keflavík airport

PRIVATE DRIVER GUIDE INCLUDED:

Welcome at the airport by the driver-guide;
Driver-guide in English (from the arrival to the departure check-in);
Car for the whole trip (to be selected);
Basic car insurance – Collision Damage Waiver;
Super CDW Insurance and Gravel protection;
Fuel for the whole trip;
Hotel regime B&B regimen - typology to be selected;
Folder with brochures, programmes and maps;

SELF & DRIVE INCLUDED:

Pickup of the car at the airport;
B&B accommodations - typology to be selected;
Car - to be selected (pick up at the airport on arrival and delivery in Reykjavík on day 4);
Basic car insurance – CDW;
Transfer from the rental car to the accommodation point on day 4;
Transfer by bus from the hotel to the airport on day 5;
Folder with brochures and big map with the underlined circuit, overnight places and stop suggestions;
Mobile phone tracking (whatsapp) between the client and the local agent in Iceland;

SNAEFELLSNES

Super Jeep Day Tour

Whole Year

The Snæfellsnes super jeep day tour explores the area around the Snæfellsjokull, where Jules Verne brought his characters down to the centre of the Earth. Via Borgarnes we enter the Snæfellsnes peninsula to Langá, famous salmon fishing river, followed by the villages of Stykkishólmur, Grundarfjörður and Ólafsvík, passing by Kirkjufell. Stop at the black sand beaches of Djupalonssandur, with rock formations and unique cliffs. Right by the famous volcano, we continue from the village of Hellnar to Arnastapi. Prepare yourself for a beautiful and uncommon walk through some basaltic rock formations. Stop in Budir and return to Reykjavík.

INCLUDED:

Pick up and Drop of Guests at the Hotel;

Super Jeep with Driver-Guide;

Fuel;

Basic car insurance – Collision Damage Waiver;

Super CDW Insurance and Gravel protection;



THÓSMÖRK

Super Jeep Day Tour

Whole Year

1 Day Tour • 10 Hours

The Thósmörk super jeep day tour is a classic which has its first stop at the Seljalandsfoss waterfall, where, on foot, you can walk behind the waterfall. We continue to Thósmörk where, after crossing a few rivers without a bridge, you'll go for a walk/hiking which can reach a maximum of 1,5 h. After seeing the stunning valley behind the famous Eyjafjallajökull volcano and glacier (which stopped aerial traffic in Europe in 2010), we continue to the Skogafoss waterfall and to the black sand beach afterwards, with the famous Reynir basaltic formations. Return to Reykjavík.

INCLUDED:

Pick up and Drop of Guests at the Hotel;
Super Jeep with Driver-Guide;
Fuel;
Basic car insurance – Collision Damage Waiver;
Super CDW Insurance and Gravel protection;

GENERAL ADVICE: Take a raincoat, wind-proof jacket, appropriate footwear and bathing clothes with you (swim shorts/bikini and a towel)



BATHS AND NATURE IN LAUGARFELL

Super Jeep Day Tour

Whole Year

1 Day Tour • 8 Hours

In this tour we will take you for an exciting off road journey. First we will stop by the beautiful waterfall Goðafoss. From there we will drive in the Bárðardalur valley and stop at Aldeyjarfoss, surrounded by majestic basalt columns. Next we will head in to the rough highland and take the old route over Sprengisandur. Laugafell is located only 15 km from Iceland's second largest glacier Hofsjökull, and in Europe's largest dessert Sprengisandur. Once there you can take a bath in a natural pool in the middle of nowhere where the hot water comes right up from the ground. After that we will drive up on a nearby mountain Laugafell (892m above sea level) and we return to Akureyri.

INCLUDED:

Pick up and Drop of Guests at the Hotel;
Super Jeep with Driver-Guide;
Fuel;
Basic car insurance – Collision Damage Waiver;
Super CDW Insurance and Gravel protection;



THE FANTASTIC WATERFALLS

Super Jeep Day Tour

Whole Year

1 Day Tour • 8 Hours



On this tour we will take you for a journey to some of the most beautiful waterfalls in Northern Iceland. The first one being Goðafoss (Waterfall of the gods). From there we will drive up the Bárðardalur valley towards the waste highlands where we will have to do a little Off-Road trailing to reach the majestic waterfall Aldeyjarfoss. The characteristic black basalt columns provide a stark contrast against the thrashing white foam, making it one of Iceland's most photographic gems. Then, Hrafnabjargafoss. This waterfall is not known by many and very few tourists ever see it. The falls spreads out over a series of cliffs and at one place it falls into a closed rock bowl. After testing our skills in the harsh highlands we make a little twist and take you on a Off-Road expedition. Return back to Akureyri.

INCLUDED:

Pick up and Drop of Guests at the Hotel;
Super Jeep with Driver-Guide;
Fuel;
Basic car insurance – Collision Damage Waiver;
Super CDW Insurance and Gravel protection;

GENERAL ADVICE: Take a raincoat, wind-proof jacket, appropriate footwear and bathing clothes with you (swim shorts/bikini and a towel) water bottle or other drink, snack or lunch, sunglasses, camera and... good mood!

LANDMANNALAUGAR

Super Jeep Day Tour

10 to 12 Hours

Susceptible to Meteorological Conditions

The Landmannalaugar super jeep day tour allows a unique experience. Visit to the interior/highlands of Iceland, in order to admire the colourful mountains, in a zeolite region, geologically fascinating. The trip will take you to the lava fields of one of the most famous volcanoes in Iceland - Hekla. We continue to Landmannalaugar, crossing, by super jeep, several rivers and geothermal springs which come from the inside of the Earth. Stop for hiking to see the magnificent landscape and bathe in the warm water geothermal springs. Then, stop at the Hjálparfoss and return to Reykjavík.

INCLUDED:

Pick up and Drop of Guests at the Hotel;
Super Jeep with Driver-Guide;
Fuel;
Basic car insurance – Collision Damage Waiver;
Super CDW Insurance and Gravel protection;



HIGHLANDS ASKJA VOLCANO

Super Jeep Day Tour

10 to 12 Hours

Susceptible to Meteorological Conditions

INCLUDED:

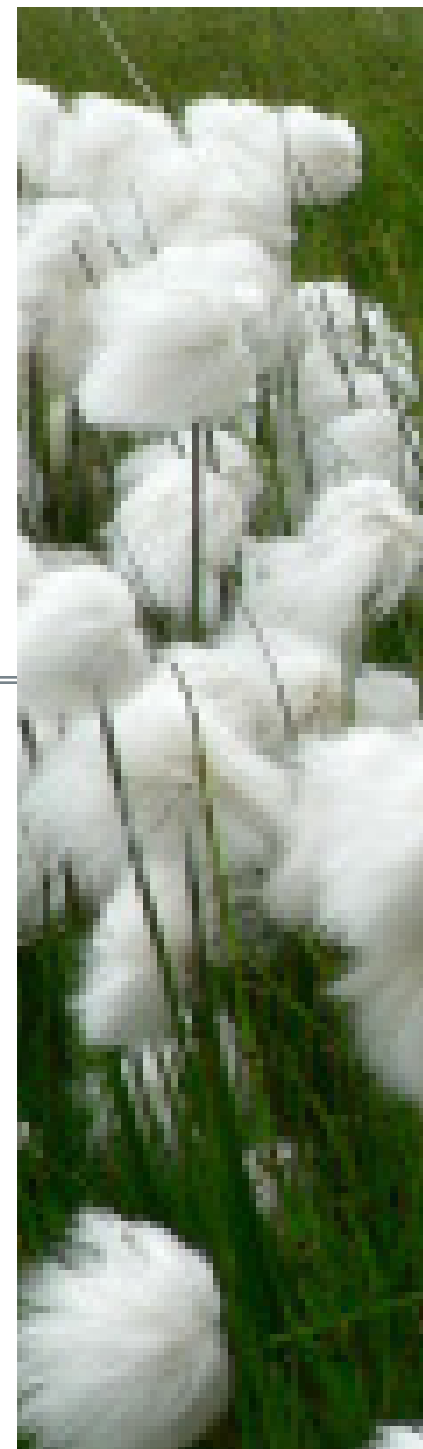
Pick up and Drop of Guests at the Hotel;
Super Jeep with Driver-Guide;
Fuel;
Basic car insurance – Collision Damage Waiver;
Super CDW Insurance and Gravel protection;

Join us on an “once in a lifetime” adventure into the incredible wastelands of the Icelandic highlands. On this tour we take you far into the centre of Iceland, to enormous Askja caldera and its lunar-like landscape. We will take you to scenes where NASA trained their astronauts for the Apollo program, where Icelandic outlaws hid and lived during the middle ages including the most famous one Fjalla-Eyvindur, all taking part in Iceland’s largest lava field Ódáðahraun. We will follow the main road from Akureyri through Mývatn (pick up possible on the way) and a little further until we reach the Old Crater Hrossaborgir, here we will turn into the highlands and follow a rough Off-Road trail which leads us through a series of sceneries including rough lava fields, soft sand dunes, wild and calm rivers, blooming highland oasis’s, great canyons, majestic mountains, volcanic craters and hot & cold lakes



SUMMER

Come and be dazzled by Iceland's epic and unique nature. Visit the most imposing waterfalls and the most extensive glacier in Europe. Climb to the top of the island on the highest road in Iceland to enjoy the panorama over the fjord. Walk among canyons, volcanic craters, geothermal pools and visit museums with peat walls. Taste shark with Brenivin and photograph the whales in their natural habitat. If you prefer a tailor-made service, come with your friends and organize your own group. Then let our expert guides guide you to the most fascinating and untouched places in Iceland. Come to the most secret bird nesting refuges, photographer's paradises.





Half Day Tour 1 · Akureyri: Godafoss

Akureyri · Godafoss · City Tour · Akureyri

The car/BUS will pick you up at the cruise ship. The first stop is Godafoss (the waterfall of the Gods), symbol of the implementation of Christianity in Iceland. Legend has it that Goðar Thorgeir threw all the statues of the pagan gods into the cascade. Return to Akureyri and small city tour with highlights to the church Akureyrarkirkja, botanical garden - Lystigardur and the colorful wooden houses where the city was born and where the Minjasafnid and Nonnahús museums. The driver-guide will drop you at the cruise ship but some guests can stay in downtown.

Full Day Tour 1 · Akureyri: Northern Jewels

Akureyri · Lago Mývatn · Krafla · Hlidarfjall · Akureyri

The car/BUS will pick you up at the cruise ship. The first stop is Godafoss (the waterfall of the gods), symbol of the implementation of Christianity in Iceland, followed by lake Mývatn which is a natural conservation area and a privileged place



CRUISE SHIPS

From Akureyri

Half Day Tours only for Groups

for birdwatchers, photographers and nature lovers since 1974. Stop by the pseudo-craters of Skutustusadur and the petrified magma and basalt constructions of Dimmuborgir, which is believed to be inhabited by elves. The trip continues along the volcanic crater Hverfell, to the fumaroles and mud and lava pots of Namaskard, a place with orange ground which reminds us of Mars, with an intense sulfur smell. Return to Akureyri. The driver-guide will drop you at the cruise ship.

Full Day Tour 2 · Akureyri: Herring Ring

Akureyri · Siglufjörður · Akureyri

The car/BUS will pick you up at the cruise ship. The trip starts towards Siglufjörður, going through the new tunnels in the region. At the old herring-fishing capital you can visit the best maritime museum in the country, while you visit the small and picturesque fishing village. With the Arctic Ocean in the mix, a small stop at Miklavatn lake is done for a beautiful panoramic view. Then, we go through Trollaskagi, a mountain massif full of legends with petrified ogres - Trolls. In Eyjafjörður you'll pass Dalvík and see the Hrísey island. Return to Akureyri for a small city tour. The driver-guide will drop you at the cruise ship.



INCLUDED:

Welcome at ship's harbor;
Folder with information and maps;
Driver-guide in English;
Insurances;
Car/BUS;
Fuel & tolls;

* Any changes to the programmes due to weather conditions or other force majeure will be safeguarded.

** The Day Tours can be used for other occasional situations - besides cruise ships



CRUISE SHIPS

From Isafjörður

INCLUDED:

Welcome at ship's harbor;
Folder with information and maps;
Driver-guide in English;
Insurances;
Car/BUS;
Fuel & tolls;
Food tasting;

*Any changes to the programmes due to weather conditions or other force majeure will be safeguarded.



Half Day Tour 1 · Isafjörður: Fjords and Nature

Isafjörður · Tröð · Bolungarvík · Isafjörður

The car/BUS will pick you up at the cruise ship. Isafjörður is the largest village of the western fjords and an important center of commerce and culture. The old part of the city, Nedstikaupstadur, has 18th century houses, reflecting the importance as one of Iceland's main trading posts in the past. We go to Sudavík - Tröð belvedere for a view of Isarfjardardjup. We follow a coastal road towards Bolungarvík. Visit to the church and Osvor, former fishermen's site, restored in 1988. Bolungarvík lies in a bay surrounded by steep mountains. Maritime Museum. Tasting of the former fishermen's food: Brennivín and dried fish. The driver-guide will drop you at the cruise ship.

Full Day Tour 1 · Isafjörður: Fjords and Nature

Isafjörður · Dynjandi · Isafjörður

The car/BUS will pick you up at the cruise ship. The trip begins through the western fjords to the Dynjandi waterfalls, the most well-known waterfalls in the region. Trip through the jagged, inhospitable and scenic western fjords passing by the small villages of Flateyri and Thingeyri. You'll stop in natural viewpoints which alternate with small bird sanctuaries. Return to Isafjörður. If the weather conditions are good, we will go to the Bolafjall viewpoint. The driver-guide will drop you at the cruise ship.

** The Day Tours can be used for other occasional situations - besides cruise ships



CRUISE SHIPS

From Seydisfjordur

Day Tour 1 · Seydisfjordur: Waterfalls and Geology

Seydisfjordur · Hallormstadur · Hengifoss · Seydisfjordur

We will explore the area around Lake Lagarfljot, where the largest forest area in all of Iceland lies. You'll see the Hallormstadur forest and then the Hengifoss and Litlanesfoss waterfalls. These waterfalls are treasures of geology, from different geological eras and with unique columns and basaltic formations. Short walk to take pics. Return to Seydisfjordur passing the Skaftfell - Center for Visual Art. The driver-guide will drop you at the cruise ship.

INCLUDED:

Welcome at ship's harbor;
Folder with information and maps;
Driver-guide in English;
Insurances;
Car/BUS;
Fuel & tolls;

CRUISE SHIPS

From Reykjavík

Half Day Tours Only For Groups

Half Day Tour 1 · Reykjavík: Reykjanes Peninsula

Reykjavík · Reykjanes peninsula · Leif Erikson bridge · Seltún Reykjavík

The car/BUS will pick you up at the cruise ship for the trip through Reykjanes, crossing the lava fields which form the magnetic lunar landscape of the peninsula. We pass by places like Hafnir and Sandvíkur. We visit the Leif Erikson bridge in order to cross on foot from the American tectonic plate to the Eurasian tectonic plate. We continue to the fumaroles and sulfated mouths of mud and lava in Krýsuvík/Seltún. The driver-guide will drop you at the cruise ship or if you prefer in the city center.

Half Day Tour 2 · Reykjavík: the Complete city tour

Reykjavík · City Tour · Perlan · Reykjavík

The car/BUS picks him up on the cruise ship. You will take a city tour to see the Icelandic capital. Highlights: the Höfði house, where in 1986 the non-proliferation treaty between M. Gorbachov and Ronald Reagan was signed; the Viking ship-shaped

sculpture - Sólfarid, after crossing the downtown we stop at the Hallgrímskirkja, the old harbour, Lake Tjörnin, the City Hall, the Nordic house and Perlan, where you will see multimedia exhibitions with the Wonders of Iceland and the forces of nature - volcanoes and geothermia. You can imagine yourself on the ice or cliffs covered with sea birds of Latrabjarg. Panoramic view of the city. Our driver-guide will pick you up at the cruise ship.

Half Day Tour 3 · Reykjavík: Blue Lagoon and city tour

Reykjavík · Blue Lagoon · Reykjavík

The car/BUS picks him up on the cruise ship for the trip to Blue Lagoon, going through the lava fields which form the magnetic lunar landscape of the Reykjanes peninsula. Blue Lagoon is an open-air geothermal pool between 30°C and 40°C. It's one of the unique and famous attractions of Iceland. An open-air, geothermal Spa, which allows harmony between the body, mind and spirit. Return to Reykjavík for a small city tour. The driver-guide will drop you at the cruise ship

Full Day Tour 1 · Reykjavík: Golden Circle

Reykjavík · Thingvellir National Park · Géiser · Gullfoss · Reykjavík

The car/BUS picks him up on the cruise ship. Trip for the Golden Circle, the oldest day tour of the island. Next, Geysir Park, which showed these phenomena to the world and where the Strokkur geyser expels hot water over 35 meters high, followed by the Faxi and Gullfoss waterfalls. The trip ends at the Thingvellir natural park, where it is possible to see the oldest parliament in the world, admire the natural beauty and experience the separation

of the two tectonic plates. Return to Reykjavík. The driver-guide will drop you at the cruise ship.

Full Day Tour 2 · Reykjavík: South Coast

Reykjavík · Seljalandsfoss · Skógafoss · Dyrhólaey · Reykjavík

The guide will pick you up at hotel. The tour along the south coast stops at the Skógafoss and Seljalandsfoss waterfalls. With the Eyjafjallajökull glacier (stopped the air traffic of Europe in 2010) on our side we head towards Vík. You will see the black sandy beaches and rocks of Reynisdrangur. Return to Reykjavík.

INCLUDED:

Welcome at the hotel by the Ice Tourism representative;
Folder with information and maps;
Driver-guide in English ;
Insurances ;
Car/BUS ;
Fuel & tolls;

OPTIONALS:

Fly Over Drive + 30€/PAX
Blue Lagoon + 85€/PAX
Need to buy in advance



SOUTH: BEYOND THE WALL

Group Programmes

(Game of Thrones)

5 Days · 4 Nights



Day 1 · Arrival to airport

Keflavík · Reykjavík

Welcome by the guide and transfer to the hotel.
Accommodation in Reykjavík.

Day 2 · Reykjavík · Vík (region)

Reykjavík · Golden Circle · Lava Center Seljalandsfoss · Skógafoss · Vík

Breakfast at the hotel and trip through the southwest of Iceland. Beginning of the Golden Circle, the oldest day tour of the island. The trip starts with Thingvellir Natural Park, the place where the 1st and 4th seasons of “Game of Thrones” were filmed, and where it’s possible to see the oldest parliament in the world, admire the natural beauty and put a foot in Europe and the other in America in the separation of both tectonic plates. Next, Geysir Park, which showed these phenomena to the world and where the Strokkur geyser expels hot water over 35 meters high. Then, the Gullfoss waterfall, Iceland’s symbol. In Hvolsvöllur you’ll see Lava centre and its interactive exhibit about the volcanoes in Iceland, followed by two waterfalls - Seljalandsfoss and Skógafoss, off the Eyjafjallajökull glacier and volcano which stopped aerial traffic in Europe in 2010. Accommodation in Vík.

Day 3 · Vík · Kirkjubaerklaur (region)

Vík · Eldhraun · Jokulsarlón · Fjallsárlón · Skaftafell · Kirkjubaerklaur

Breakfast at the hotel and beginning of the trip going through the Eldhraun lava fields to the great glacier of Vatnajökull, the biggest glacier in Europe. In Vatnajökull, scenes from “Game of Thrones” were filmed. Stop at Diamond beach and

the Jökulsárlón glacier lagoon. This is an unreal and unique place in the world where it is possible to see some seals among the colourful icebergs. The lagoon was the stage for scenes of two James Bond movies and occasionally you can take a boat trip around the colourful icebergs. Then Fjallsárlón, where it's possible to contemplate a terminal of the great glacier sitting in a natural amphitheatre, and passage by the Skaftafell national park and the Skeidararsandur alluvial plain. Accommodation in the Kirkjubaerklaustur region.

Day 4 · Kirkjubaerklaustur · Reykjavík

Reykjavík · Reynisfjara · Dyrhólaey · Blue Lagoon
Reykjavík

Breakfast at the hotel and beginning of the day trip passing the black sand beaches in Vik/Reynisfajara, where scenes from the 7th season of "Game of Thrones" were filmed, and the Dyrhólaey bird sanctuary, to photograph the puffins, bird symbol of Iceland. Next, Blue Lagoon, going through the lava fields and the magnetic lunar landscape of the Reykjanes peninsula. It's a salt and mineralised water fountain which springs from the interior of the Earth between 38°C and 40°C, in a mix of power, relaxation and beauty. It's one of Iceland's attractions. A geothermal Spa

in the open air, which allows harmony between body and spirit. Accommodation in Reykjavík.

Day 5 · Reykjavík · Departure from Keflavík airport

Breakfast at the hotel and small city tour with a stop at the fantastic Fly Over Iceland which uses the most modern technology to give you the sensation of flying. Special effects including wind, fog and aromas, combined with the movement of the tour create an unforgettable experience. Transfer to the airport.

INCLUDED

Welcome at the airport;
Private transfers from the airport to the hotel in days of arrival and departure;
Hotel B&B - typology to be selected;
Guide in English (from the arrival to the departure);
BUS/vehicle for all the trip and transfers (fuel and driver expenses included);
Insurance;
Ticket in Blue Lagoon;
Lava Centre;
Fly Over Iceland;
File/folder with brochures and information about Iceland.



Day 1 · Arrival to Keflavík airport · Reykjavík
Keflavík airport · Reykjavík

Welcome by the guide and transfer to the hotel.
Accommodation in Reykjavík.

Day 2 · Reykjavík · Akureyri (region)
Reykjavík · Glaumbaer Museum · Akureyri

Breakfast at the hotel. Trip to Akureyri, considered the most beautiful city in the country. Crossing of Borgafjörður, a region full of legends where numerous accounts of Icelandic sagas. Visit to the Hraunfossar and Barnafoss waterfalls, as well as the hot spring of Deildartunga. The trip goes on along the coast, going through various populations, in a sequence of different landscapes. Visit to the Glaumbaer, an old, traditional farm (Laufás) with turf roofs, one of the most famous ethnographic museums in Iceland nowadays. City tour and accommodations in the Akureyri region.

Day 3 · Akureyri · Egilsstaðir (region)
Akureyri · Godafoss · Mývatn · Detifoss · Egilsstaðir

Breakfast at the hotel. Trip from the fjord to Godafoss (the waterfall of the gods), symbol of the implementation of Christianity in Iceland, followed by lake Mývatn which is a natural conservation area and a place for birdwatchers, photographers and nature lovers since 1974. Stop by the pseudo-craters of Skutustadur and the petrified magma and basalt constructions of Dimmuborgir, which is believed to be inhabited by elves. The trip continues along the volcanic crater Hverfell, to the fumaroles and mud and lava pots of Namaskard, a place with orange ground which reminds us of Mars, with an intense sulfur smell. By then, we're already in the

DISCOVERING ICELAND

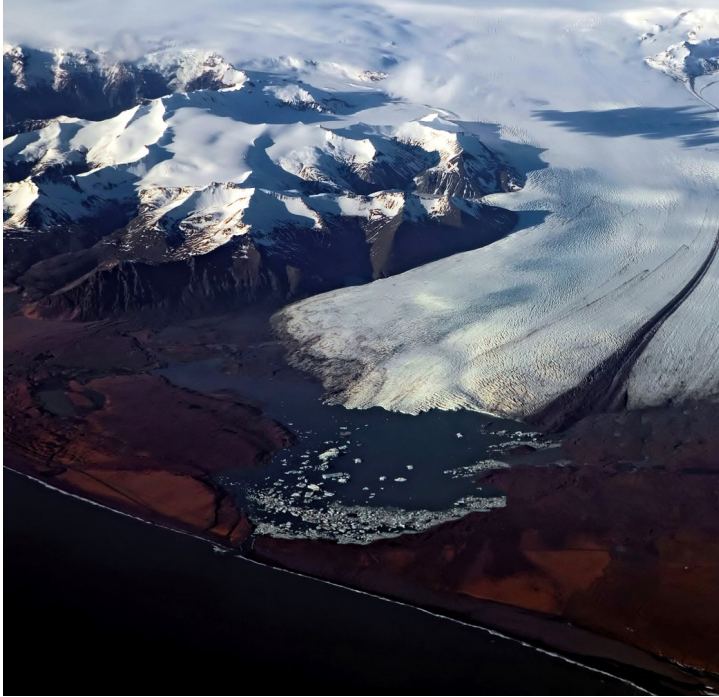
Group Programmes
8 Days · 7 Nights

12 to 19 June 2026 · 15 to 22 June 2026 · 3 to 10 July 2026
6 to 13 July 2026 · 13 to 20 July 2026 · 10 to 17 August 2026

Krafla area, where one of the main geothermal energy production centres is located. The trip goes on eastward. At the national park of Jökulsárgljúfur, we visit the biggest waterfall in Europe. Detifoss is 44 meters high and 100 wide, and during the Summer it drops over 200 000 litres of water per second. Accommodation in the Egilsstaðir region.

Day 4 · Egilsstaðir · Höfn (region)
Egilsstaðir · Eskifjörður · Stodvarfjörður · Petra Collection · Djúpivogur · Southeast

Breakfast at the hotel. Passing through the cities of Egilsstaðir, Reyðarfjörður and Eskifjörður where the biggest aluminium factory in the country is located. During the day, we go along the eastern fjords, through fishing villages where is it possible to see the small ports with the colourful fishing boats. In Stöðvarfjörður, we visit the mineral collection, the biggest in Iceland. It is visited by over 200 000 people annually, and it is the result of the research and gathering of minerals over 60 years ago. The trip continues to Djúpivogur, through geese and swan sanctuaries. We will see the great glacier of Vatnajökull. Accommodation in the Höfn region.



Day 5 · Höfn · Hella (region)
Southeast · Fjallsárlón · Dyrhólaey · Skógafoss
Seljalandsfoss · Hella/Hvolsvollur

Breakfast at the hotel and beginning of the trip along Vatnajökull, the biggest glacier in Europe. The first stop is the Jökulsárlón glacial lagoon. This is an unreal and unique place in the world where it is possible to see some seals among the colourful icebergs. On the lagoon were filmed scenes of two James Bond movies and occasionally you can take a boat trip around the lagoon's colourful icebergs. Fjallsárlón follows, where it's possible to contemplate a terminal of the great glacier while sitting in a natural amphitheatre. We pass through the Skaftafell national park, through the black sand beaches in Vík and the bird sanctuary of Dyrhólaey, to photograph the puffins, symbol bird of Iceland. Highlights at the end of the day for two beautiful waterfalls - Skógafoss and Seljalandsfoss. Accommodation in the Hella/Hvolsvollur region.

Day 6 · Hella · Reykjavík

Hella · Faxi · Gullfoss · Geysir · Thingvellir · Reykjavík

Breakfast at the hotel and trip through the Southwest of Iceland. Beginning of the Golden Circle, the oldest day tour of the island. Trip to Geysir Park, which showed these phenomena to the world and where the Strokkur geyser expels hot water over 35 meters high. Next, the Faxi waterfall and the Gullfoss waterfall, symbol of Iceland. The trip ends at the Thingvellir natural park, where it's possible to see the oldest parliament in the world, admire the natural beauty and place a foot in Europe and the other in America in the separation of both tectonic plates. Accommodation in Reykjavík.

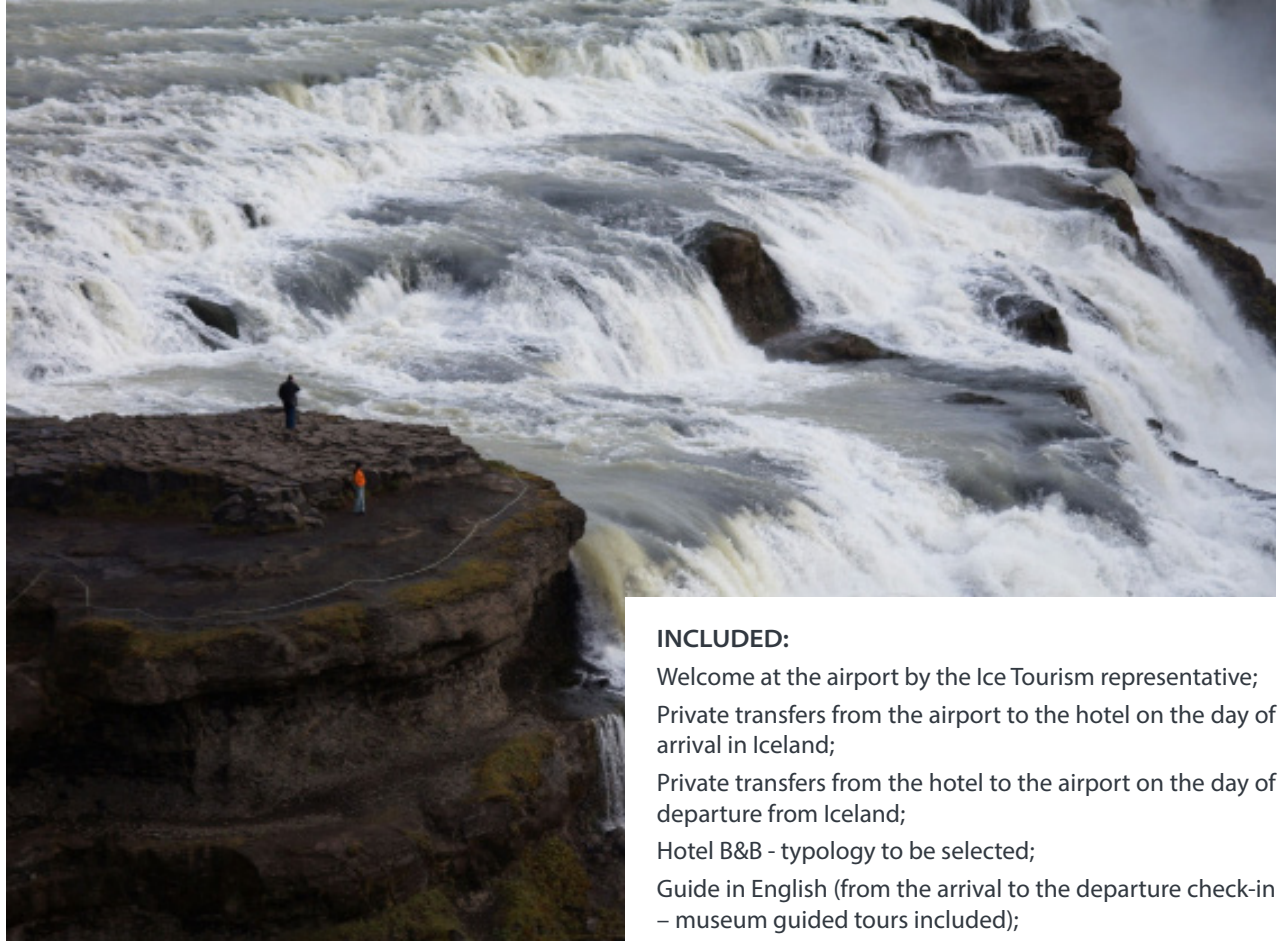
Day 7 · Reykjavík · Reykjavík

Reykjavík · National Museum · Blue Lagoon · Reykjavík

Breakfast at the hotel and city tour in Reykjavík. Highlights: Hofdi House, Sólfarid, Lutheran cathedral - Hallgrímskirkja, Tjörn lake and the National Museum, where you can learn a little bit more about the Viking culture and Iceland's history. Trip to the Blue Lagoon going through the lava fields which form the magnetic lunar landscape of the Reykjanes peninsula. The Blue Lagoon is an open-air geothermal Spa with salt and mineralized water which springs from the centre of the Earth between 30°C and 40°C. Afternoon in the capital. Accommodation in Reykjavík.

Day 8 · Reykjavík · Departure from Keflavík airport

* Any changes to the programmes due to weather conditions or other force majeure will be safeguarded.



OPTIONALS:

NEW: Fantastic in Reykjavík! Fly Over Iceland: Using the most modern technology for the sensation of flying;
 Glacier Walk (3 to 3,5 h duration) with crampons;
 Snowmobile (2 h duration);
 SuperJeep on the glacier;
 Inside the Volcano;
 Into the Glacier;
 Sightseeing flight: Ice and Fire - Glaciers and volcanoes (approx. 1.45 h);
 Boat trip for the Whale Watching – 3 h duration;
 Rides Icelandic horse;
 Jacket rent.

INCLUDED:

Welcome at the airport by the Ice Tourism representative;
 Private transfers from the airport to the hotel on the day of arrival in Iceland;
 Private transfers from the hotel to the airport on the day of departure from Iceland;
 Hotel B&B - typology to be selected;
 Guide in English (from the arrival to the departure check-in – museum guided tours included);
 BUS/vehicle for all the trip and transfers (fuel and driver expenses included);
 Collision Damage Waiver;
 Super CDW Insurance and Gravel protection;
 Glaumbaer Museum;
 Petra Mineral Museum;
 National Museum;
 Blue Lagoon;
 File/folder with brochures and information about Iceland;

EXCLUDED:

When marked as optional;
 International flights;
 Anything out of the "included" section above

SILVER ICELAND CIRCUIT

Ring Road Around Iceland

8 Days · 7 Nights

SELF & DRIVE INCLUDED:

- Pickup of the car at the airport;
- Basic car insurance – CDW;
- B&B accommodations - typology to be selected;
- Car - to be selected (pick up at the airport on arrival and delivery in Reykjavík on day 7);
- Transfer from the rental car to the accommodation point on day 7;
- Transfer by bus from the hotel to the airport on day 8;
- Folder with brochures and big map with the underlined circuit, overnight places and stop suggestions;
- Mobile phone tracking (whatsapp) between the client and the local agent in Iceland;

PRIVATE DRIVER GUIDE INCLUDED:

- Welcome at the airport by the driver-guide;
- Driver-guide in English (from the arrival to the departure check-in);
- Car for the whole trip (to be selected);
- Basic car insurance – Collision Damage Waiver;
- Super CDW Insurance and Gravel protection;
- Fuel for the whole trip;
- Hotel B&B regimen - typology to be selected;
- Folder with brochures, programmes and maps;



Day 1 · Arrival from Keflavík airport · Reykjavík

Welcome to the airport. Delivery of the car, folder, brochures and map with the underlined circuit.

Day 2 · Reykjavík · Akureyri

Start with a small city tour in the capital. Then, make the trip to Akureyri through N1 and passing by various villages, fjords and landscape gradients. Stay overnight in Akureyri.

Day 3 · Akureyri · Mývatn/Húsavík (region)

Start with a small city tour in the capital. Then, make the trip to Mývatn lake to explore the wonders of the surrounding area, not forgetting the pseudo craters and the Martian landscape with fumaroles and mud and lava pots. On the way, stop by the Godafoss waterfall. Overnight stay in Mývatn/Húsavík region.

Day 4 · Mývatn/Húsavík (region) · Egilsstaðir

After Mývatn lake drive to the east, getting to know a little bit about the interior highlands landscape of Iceland. Overnight stay in the Egilsstaðir region.

Day 5 · Egillstaðir · Höfn

Trip through the eastern fjords, with the mountains sloping into the ocean. Passage by different fishing villages and bird sanctuaries featuring birds like geese and swans. Overnight stay in the Höfn region.

Day 6 · Höfn · Hvalsvellur (region)

Trip to the Jökulsárlón glacier lagoon, whose colourful icebergs make it look unreal. Go through the southern part of Vatnajökull, the biggest glacier in Europe, and pass by the black sand beaches and deserts, as well as the lava fields. Take a look at the puffin sanctuary after Vík, and the Skógafoss and Seljalandsfoss waterfalls. Overnight stay in the Hvalsvellur region.

Day 7 · Hvalsvellur (region) · Reykjavík

Driving through the Golden Circle - geyser park, Gulfoss waterfall and Thingvellir national park. We suggest to finish with the Blue Lagoon.

Day 8 · Departure from Keflavík airport

* Any changes to the programmes due to weather conditions or other force majeure will be safeguarded.

WESTERN MAGICAL CIRCUIT

West Coast and Westfjords

8 Days · 7 Nights



Day 1 · Arrival to Keflavík airport · Reykjavík

Welcome to the airport. Delivery of the car, folder, brochures and map with the underlined circuit.

Day 2 · Reykjavík · Reykjavík

Driving through the Golden Circle - Geyser park, Gulfoss waterfall and Thingvellir national park.

Day 3 · Reykjavík · Stykkishólmur

Trip via Hvalfjörður to the farming region of Borgarfjörður. We pass by the Eldborg crater towards the Snæfellsnes peninsula, with the mysterious glacier of Snæfellsjökull. Here, Jules Verne idealised the journey to the centre of the Earth.

Day 4 · Stykkishólmur · Isafjörður

Cross Breiðarfjörður by ferry to the Látrabjarg cliffs, the biggest bird sanctuary. Driving in the western fjords passing by Dynjandi waterfalls to Isafjörður.

Day 5 · Isafjörður

Explore the Isafjörður region.

Day 6 · Isafjörður · Reykjavík

Trip through the jagged and uninhabited western fjords, with unique and natural beauty, and rich in fauna, like seals and birds. Crossing to the Hólmavík village. Continuation along the Húnaflói Bay before return to Reykjavík.

Day 7 · Reykjavík · Reykjavík

We suggest spending the morning in Blue Lagoon and the afternoon on a city tour in the capital.

Day 8 · Departure to Keflavík airport

* Any changes to the programmes due to weather conditions or other force majeure will be safeguarded.

PRIVATE DRIVER GUIDE INCLUDED:

Welcome at the airport by the driver-guide;

Driver-guide in English (from the arrival to the departure check-in);

Car for the whole trip (to be selected);

Basic car insurance – Collision Damage Waiver;

Super CDW Insurance and Gravel protection;

Fuel for the whole trip;

Ferry boat crossing Breiðarfjörður day 4;

Hotel B&B regimen - typology to be selected;

Folder with brochures, programmes and maps;

SELF & DRIVE INCLUDED:

Pickup of the car at the airport;

Basic car insurance – CDW;

B&B accommodations - typology to be selected;

Car - to be selected (pick up at the airport on arrival and delivery in Reykjavík on day 7);

Transfer from the rental car to the accommodation point on day 7;

Transfer by bus from the hotel to the airport on day 8;

Folder with brochures and big map with the underlined circuit, overnight places and stop suggestions;

Mobile phone tracking (whatsapp) between the client and the local agent in Iceland;

DIAMOND ICELAND CIRCUIT

Complete Ring Around Iceland

13 Days · 12 Nights

Day 1 · Departure from Keflavík airport · Reykjavík

Welcome to the airport. Delivery of the car, folder, brochures and map with the underlined circuit.

Day 2 · Reykjavík · Reykjavík

Driving through the Golden Circle - geyser park, Gulfoss waterfall and Thingvellir national park.

Day 3 · Reykjavík · Stykkishólmur

Trip via Hvalfjörður to the farming region of Borgarfjörður. We pass by the Eldborg crater towards the Snæfellsnes peninsula, with the mysterious glacier of Snæfellsjökull. Here, Jules Verne idealised the journey to the centre of the Earth.

Day 4 · Stykkishólmur · Isafjörður

Cross Breiðarfjörður by ferry to the Látrabjarg cliffs, the biggest bird sanctuary. Driving in the western fjords passing by Dynjandi waterfalls to Isafjörður.

Day 5 · Isafjörður · Blönduós

Trip through the jagged and uninhabited western fjords to Húnaflói.

Day 6 · Blönduós · Akureyri

Trip to Skagafjörður and Siglufjörður. Then, continue until you reach the most beautiful Icelandic city - Akureyri.

Day 7 · Akureyri · Mývatn (region)

Start with a small city tour in the capital of the north of Iceland. Then, make the trip to Mývatn lake to explore the wonders of the surrounding area, not forgetting the pseudocraters and the Martian landscape with fumaroles and mud and lava pots. On the way, stop by the Godafoss waterfall. Overnight stay in the Mývatn region.

Day 8 · Mývatn (region) · Egilsstaðir

Drive north to Husavík, capital of whale watching. Then, continue to the Tjörnes peninsula to Asbyrgi Canyon. Going through the Jökulsárgljúfur park,



take a look at the biggest waterfall in Europe – Detifoss. Overnight stay in the Egilsstaðir.

Day 9 · Egilsstaðir · Höfn

Trip through the eastern fjords, with the mountains sloping into the ocean. We pass by the various fishing villages and bird sanctuaries featuring birds like geese and swans. Overnight stay in the Höfn region .

* Any changes to the programmes due to weather conditions or other force majeure will be safeguarded.



Day 10 · Höfn · Vík

Drive to the Jökulsárlón glacier lagoon, whose colourful icebergs make it look unreal. Go through the southern part of Vatnajökull, the biggest glacier in Europe. Visit the Skaftafell and end the day going through the Eldhraun lava fields.

Day 11 · Vík · Reykjavík

Explore the black sand beaches, the Dyrhólaey

natural reserve and the Skogafoss and Seljalandsfoss waterfalls. Then, after crossing the lava fields, take a bath in the Blue Lagoon.

Day 12 · day in Reykjavík

A day to explore the capital.

Day 13 · Departure from Keflavík airport

SELF & DRIVE INCLUDED:

Pickup of the car at the airport;
Basic car insurance – CDW;
B&B accommodations - typology to be selected;
Car - to be selected (pick up at the airport on arrival and delivery in Reykjavík on day 11);
Transfer from the rental car to the accommodation point on day 11;
Transfer by bus from the hotel to the airport on day 13;
Ferry crossing Breidafjörður;
Folder with brochures and map with underlined circuit, overnight and stop suggestions;
Mobile phone tracking (whatsapp) with local agent in Iceland

PRIVATE DRIVER GUIDE INCLUDED:

Welcome at the airport by the driver-guide;
Driver-guide in English (from the arrival to the departure check-in, except Reykjavík day);
Car for the whole trip (to be selected);
Hotel B&B regimen - typology to be selected;
Basic car insurance – Collision Damage Waiver;
Super CDW Insurance and Gravel protection;
Fuel for the whole trip;
Ferry boat crossing Breidafjörður day 4;
Boat in Jökulsárlón Glacier Lagoon;
Folder with brochures, programmes and maps;



Day 1 · Arrival to Keflavík airport · Reykjavík

Welcome in the airport.

Day 2 · Reykjavík · West Coast (Snaefellsnes)

Trip to the Icelandic west coast (Snaefellsnes peninsula). Visit to the Hellnar village and basaltic rock formations of Lóndrangar. Visit to Snaefelljökull volcano, famous for the book Journey To The Centre Of The Earth, written by Jules Verne.

Day 3 · West Coast (Snaefellsnes) · **Ferry boat · Patreksfjörður** (Westfjords)

In Stykkishólmur we head towards the western fjords boarding the ferry boat which crosses Breidafjörður. We arrive at the most inhospitable and remote region of Iceland, with

its own energy and the most jagged fjords.

Day 4 · Patreksfjörður · Isafjörður
(Westfjords)

Departure to meet the fjords of the west. We continue to the cliffs of Latrabjarg, the biggest bird sanctuary in all of Iceland and where it will be possible to see the puffin. Stop at the waterfall (or sequence of waterfalls) of Dynjandi.

Day 5 · Isafjörður · Hot Spring from Reykjanes · Húnáflói

Journey through the jagged west fjords. You will stop at natural viewpoints which mixed with small bird sanctuaries. In the first part of the trip, you will have the company of the islet of Vigur and the Drangajökull glacier.

Day 6 · Húnáflói · Glaumbaer Museum · Akureyri · Húsavík/Mývatn (region)

Visit Glaumbaer, an old traditional farm (Laufás), the most famous ethnographic museum in Iceland. You will arrive to Akureyri. Then, Godafoss (Waterfall of the Gods). The journey continues to Húsavík, whale watching capital.

Day 7 · Húsavík/Mývatn (region) · **Víti** (Askja) · **Húsavík/Mývatn** (region)

Trip into the interior of Iceland. We continue through gravel roads and crossing rivers without bridges, to the mountain of Herðubreið. All this wild highlands are uninhabited and its desert landscape, lunar and populated by rocks and lava. It reaches the Víti crater in the volcanic Askja complex, where NASA

ICELAND TOTAL

Complete Ring Around Iceland
with Highlands

14 Days · 13 Nights

carried out the tests before the trip to the moon. Walk to the Viti caldera that keeps its water at 25°C.

Day 8 · Húsavík/Mývatn (region) · **Detifoss · Egilsstaðir · Eskifjörður**

Visit to Lake Mývatn, which since 1974 has been a natural conservation area and a privileged place for bird watchers. You will see the pseudo-craters (Skutustadur), basalt and magma petrified rocks (Dimmuborgir), volcanic crater (Hverfell), the fumaroles and mud and lava pots (Namaskard). Then trip to the most powerful cascade of Europe - Detifoss.

Day 9 · Eskifjörður · Petra Collection · Boat in Jökulsárlón · Skaftafell

Browse the magnificent east fjords. In Stöðvarfjörður visit Petra - private collection of minerals. The journey continues through Djúpivogur, among swan sanctuaries. You'll reach Vatnajökull, Europe's biggest glacier. Stop at the Jökulsárlón Glacial Lagoon. Its colourful icebergs make this place unreal. You need to

enjoy a boat trip and the diamond beach.

Day 10 · Skaftafel · Dyrhólaey · Skógafoss · Seljalandsfoss · Hvolsvollur

Visit Skaftafell and enjoy the trip to Vík where the famous black sandy beaches of Reynisdrangur and the characteristic basaltic columns in Reynisfjara meet. Stop at Dyrhólaey and the waterfalls of Skógafoss and Seljalandsfoss.

Day 11 · Hvolsvollur · Landmannalaugar · Hvolsvollur

Trip to Landmannalaugar, in the interior (highlands) for a unique experience, in order to admire the mountains of reddish shades, in a geologically fascinating region of zeolites. Then to Landmannalaugar, crossing several rivers without a bridge and geothermal springs. A day at Landmannalaugar is geologically memorable. Bring with you a towel and bathing clothes.



Day 12 · Hvolsvollur · Gullfoss · Géiser · Thingvellir · Reykjavík

Travel through the southwest of Iceland, starting the Golden Circle, the oldest day tour on the island. Trip to Geysir Park, where the Strokkur geyser expels hot water over 35 meters high. This is followed by Gullfoss waterfall and Thingvellir.

Day 13 · Reykjavík · Blue Lagoon · Reykjavík

Trip to Blue Lagoon, a source of salt and mineralized water that sprouts from the Earth between 38° and 40°C

Day 14 · Reykjavík · Departure from Keflavík airport

* Any changes to the programmes due to weather conditions or other force majeure will be safeguarded.

SELF & DRIVE OR PRIVATE DRIVER GUIDE INCLUDED:

Reception at the airport by our representative to deliver the maps and to clarify the itinerary;

Accommodation 13 nights B&B (select preference);

Car - to be selected (pick up at airport on arrival and delivery at departure);

Basic Car Insurance - CDW · Super CDW and Gravel Protection

Folder with brochures and big map underlined with circuit, overnight stays and stop suggestions;

Personalized follow-up via mobile - Whatsapp;

Jökulsárlón lagoon boat trip;

Petra Mineral Museum;

Glaumbaer Museum;

Breydarárdur ferry boat for car and occupants;

Blue Lagoon



IN THE ROUTE OF THE GEOTHERMAL SPRINGS

Adventure Package (with Highlands)

15 Days • 14 Nights

This circuit/package will show the true diversity of the island. A trip with 4WD Jeep, with highlights to some of the uninhabited interior/highlands, in order to feel and live the deep Iceland. The tour is designed for you to be able to take some walks and bathe in some of the most interesting hot springs, volcano craters, pools and geothermal SPAs. After all, these are unique natural phenomena that characterize Iceland, consisting of hot water, silica and minerals that sprout from the interior of the earth in order to refresh body, mind and spirit. Come with us and enjoy the wild nature in Iceland!



PRIVATE DRIVER GUIDE INCLUDED:

Welcome at the airport;
Folder with brochures and necessary support material;
Airport pickup with private IN/OUT airport - hotel - airport;
Trip in 4WD Toyota Land Cruiser/ Mitsubishi Pajero or similar except transfers and day 14 of the trip;
Private driver's guide (includes expenses such as food and accommodation);
Fuel for the whole trip;
Basic car Insurance – CDW;
Super CDW and Gravel Protection Insurance;
B&B and private bath accommodation;
Ferry boat to cross Breidafjörður;
Blue Lagoon

Day 1 · Arrival to Keflavík airport · Reykjavík

Welcome in the airport.

Day 2 · Reykjavík · West Coast

Snæfellsnes volcano.

Day 3 · West Coast · Patreksfjörður

Latrabjarg · Raudisandur.

Day 4 · Patreksfjörður · Bolungarvík

Several geothermal springs for bathing in the middle of nature.

Day 5 · Bolungarvík · Nordurfjörður

Bolafjall mountain - possible hiking in Hornstrandir nature reserve (access by boat).

Day 6 · Norddurfjörður · Akureyri

Geothermal pools after hiking - Several alternatives.

Day 7 · Akureyri · Mývatn

Akureyri · geothermal hot spring in Laugafell and then Godafoss · night in Mývatn.

Day 8 · Day in Mývatn

Mývatn · cave in Grjótgjá (Stóragjá) · Mývatn Natural baths.

Day 9 · Mývatn · Eskifjörður

Mývatn · bath in Víti crater/Askja · Laugarvalladalur /

Mývatn · bath in Víti crater/Askja · Laugarvalladalur / Laugarvellir hot spring Laugavallalaug · Eskifjörður

Day 10 · Eskifjörður · Höfn

Eskifjörður · Lagarfljot · Hengifoss · Höfn

Day 11 · Höfn · Hvolsvöllur**Day 12 · Hvolsvöllur · Fludir** (Hvolsvöllur)

Hvolsvöllur · Thorsárdalur (hot spring

Thjórárdalslaug) · Thósmork · hiking to the hot spring in Landmannalaugar – Fludir

Day 13 · Fludir (Hvolsvöllur) · **Reykjavík**

Fludir/Hvolsvöllur · Faxi · Geysir · Gulfoss · Reykjavík

Day 14 · Reykjavík · Reykjavík

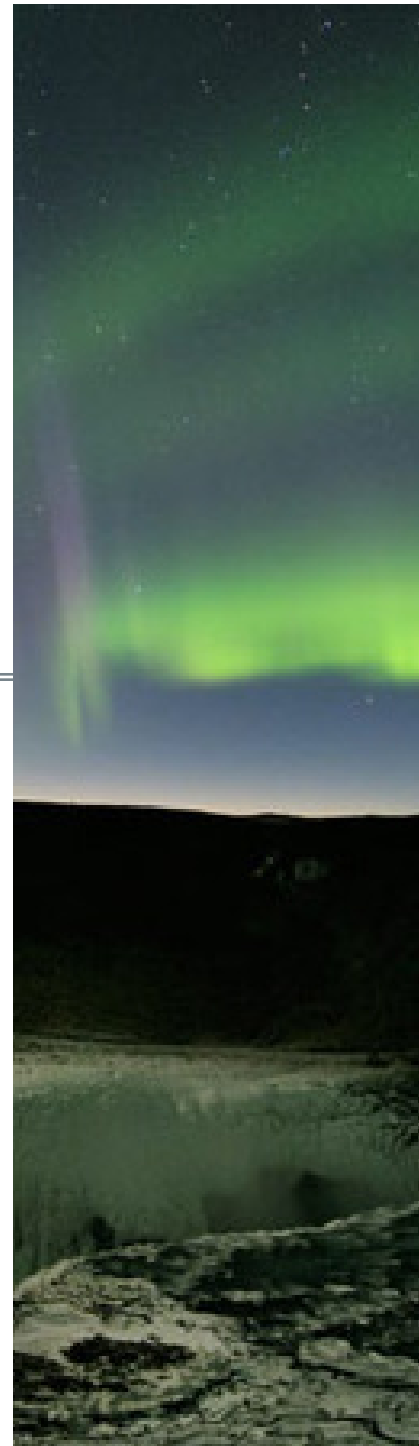
Reykjavík · SPA Blue Lagoon · Reykjavík

Day 15 · Departure from Keflavík airport

WINTER

In the winter you can experience the excitement of a country asleep by an extensive white mantle. It is the ideal time of the year to meet elves, trolls, leprechauns, witches and a whole mystical world populated by magical beings. It is the time to come and meet the aurora borealis, to feel the intoxicating nightlife that contrasts with the gathering of the most isolated places. It is the time to bath in the geothermal pools in the open air while it snows, in harmony with nature.

Feel the magic that only the Icelandic winter provides.





BUS DAY TOURS (COMBO)

From Keflavík/Reykjavík

8 Days · 7 Nights

English Speaking Guide

Day 1 · Keflavík airport · Reykjavík

Day 2 · Reykjavík · West Coast (Snæfellsnes & caves) · Reykjavík (DURATION: 11 h)

This tour takes you west from Reykjavik on a scenic route to Borgarfjörður and the village of Borgarnes where a short stop will be made for refreshments. Next up is a visit to the idyllic Arnarstapi village where you'll take a walk to view the extraordinary landscape along the precipitous shoreline. After lunch, the tour continues towards the lava cave - Vatnshellir. The tour continues to Djúpalónssandur, a tranquil, black-pebbled beach that offers beautiful views out to the sea and fascinating history that lies in the Snæfellsjökull National Park, close to where Jules Verne located his entrance for the "Journey to the Centre of the Earth". Leaving Djúpalónssandur you'll travel past striking landscapes to mountain Kirkjufell that towers 460 meters up from the shoreline and where 'Game of Thrones' was filmed.

Day 3 · Reykjavík · Golden Circle express · Reykjavík (DURATION: 6 h)

Trip for the Golden Circle, the oldest day tour of the island. Next, Geysir Park, which showed these phenomena to the world and where the Strokkur geyser expels hot water over 35 meters high, followed by Gullfoss waterfall. The trip ends at the Thingvellir natural park, where it is possible to see the oldest parliament in the world, admire the natural beauty and experience the separation of the two tectonic plates. Return to Reykjavík.

Day 4 · Reykjavík · South Coast and Glacier Lagoon · Jokulsárlón (Day 1)

DAY ONE: On South Coast & Jökursárlón Glacier Lagoon tour, you will travel along Iceland's South Coast on the narrow strip of lush farmland that cuts between mountains, glaciers, and the vast Atlantic Ocean. The journey includes stops at natural treasures, including Skógafoss waterfall, views of Skaftafell National Park, Diamond Beach, Eldhraun lava fields and Vatnajökull glacier to name but a few. Passing the southern edge of the mighty Vatnajökull Glacier roughly midway between Reykjavik and Jökulsárlón Glacier Lagoon offers magnificent views of glaciers, rivers and endless plains of sand. Vatnajökull Glacier National Park stretches over an area of 14,000 square km, or roughly ten times the size of London. Packed with icebergs in various shades of white and blue, the extraordinary scenery at Jökulsárlón Glacier Lagoon is sure to take your breath away. Seals are a fairly common sight both at the mouth of the lagoon and at the seaside beach. Then we go to the hotel, where you will be able to have dinner (dinner included in the price of the tour) and relax. During winter time, if the



weather permits, you can see the northern lights.

Day 5 · Jokulsárlón · South Coast and Glacier Lagoon · Reykjavík (Day 2)

DAY TWO: After breakfast, you return to the Jökulsárlón lagoon. From Jökulsárlón you proceed to the Skeiðará Bridge monument, where you can see information about the fragility of man-made structures in the face of nature. In November 1996, a volcanic eruption destroyed the Skeiðará Bridge. The trip continues to Vík and Reynisfjara black sand beach, with a final stop at the Seljalandsfoss waterfall.

Day 6 · Reykjavík · Blue Lagoon + Northern Lights Tour · Reykjavík

Roundtrip transfer to the Blue Lagoon, where you will be able to relax and soak in the relaxing blue waters, enjoying the surrounding landscape. This open-air spa is powered by the mixture of seawater and geothermal groundwater in contact with lava. Entrance to the Blue Lagoon is not included. At 8 pm, Northern Lights tour, going to a dark place away from the city lights. (DURATION: 3 to 5 h)



Day 7 · Reykjavík · City sightseeing · Reykjavík (DURATION: 3 h)

Tour to see the main attractions of the capital. Notably the Höfði house, where the nuclear non-proliferation treaty was signed between Ronald Reagan and Mikhail Gorbatsjov in 1986. The tour continues to the Harpa concert hall and conference centre, 2013 winner of the European Union Prize for Contemporary Architecture - Mies van der Rohe Award. This is followed by the city centre and Hallgrímskirkja, Reykjavík's Lutheran cathedral. Finally, the Perlan, which offers a 360° view of Reykjavík and Bessastaðir (the President's official residence).

Day 8 · Reykjavík (Free day until departure)

INCLUDED:

Hotel B&B (APA) (6 nights in Reykjavík 4 and 1 night in country hotel Gerði)

Keflavík airport - Reykjavik - Keflavik airport

Day 2: Snæfellsnes Peninsula + Cave Vatnshellir (approx. 11 h)

Day 3: Golden Circle Express Tour (approx. 6 h)

Days 4 and 5: South Coast, Glacier Lagoon & Ice Cave (2 days 1 night)

Day 6: Blue Lagoon without ticket (optional) Northern Lights Mystery Tour (3 to 5 h)

Day 7: Reykjavik City Sightseeing Tour (approx. 3 h)



Winter in Iceland is very unique and seductive. This is the time of year when you can meet the magical beings - elves and goblins, legends and other mythical beings that fill the imagery of Icelandic culture and which literature, music and the arts in general replicate so well. The endless night, the mountains covered in white, the snow snaking along the roads and the Northern Lights invited you to enter a world beyond our time, resembling the magic of fairy tales.

YULE LANDS AND THE NOTHERN LIGHTS

December Group
6 Days · 5 Nights

Day 1 · Arrival to Keflavík airportt · Blue Lagoon · Reykjavík

Arrival to Keflavík airport. Trip to the Blue Lagoon, going through the lava fields which form the magnetic lunar landscape of the Reykjanes peninsula. The Blue Lagoon is an open-air geothermal pool between 30°C and 40°C. It's one of the unique and famous attractions of Iceland. An open-air, geothermal Spa, which allows harmony between the body, mind and spirit. Return to the hotel in Reykjavík.

Day 2 · Reykjavík · City tour + Fly Over Iceland · Flight to Akureyri · Akureyri

Breakfast in the hotel. City-tour during the morning. Highlights: the Höfði house, where in 1986 the non-proliferation treaty between M. Gorbachov and Ronald Reagan was signed; the Viking ship-shaped sculpture - Sólfarid; after crossing the downtown we stop at the Hallgrímskirkja; Lake Tjörnin; the old harbour and Fly Over Iceland. Flight to Akureyri, near arctic circle and considered the most beautiful

town in Iceland. City tour and Overnight stay in Akureyri.

Day 3 · Akureyri · Godafoss · Mývatn (Mývatn baths and Traditional Dinner with Yule Lads)

Breakfast in the hotel. Trip to Godafoss (the waterfall of the gods), symbol of the implementation of Christianity in Iceland, followed by lake Mývatn which is a natural conservation area and a place for birdwatchers, photographers and nature lovers since 1974. Stop by the pseudo-craters of Skutusstadir and the petrified magma and basalt constructions of Dimmuborgir, which is believed to be inhabited by elves. The trip continues along the volcanic crater Hverfell, to the fumaroles and mud and lava pots of Namaskard, a place with orange ground which reminds us of Mars, with an intense sulphur smell. Time to bathe in the Mývatn Baths with the Christmas Yule Lads. The water has minerals coming from inside of the earth. Possible to see the Northern Lights. Traditional Christmas dinner and Overnight stay in Mývatn.

Day 4 · Mývatn · Akureyri Christmas House · flight to Reykjavík · Reykjavík

Breakfast in the hotel. We go to the Eyjafjörður to visit the Christmas house at the edge of the fjord and where once again, you will live the magical world of Icelandic fables and legends. In Akureyri we visit the ski resort of Hlíðarfjall, where you will enjoy a panoramic view of the fjord. Return flight to Reykjavík. Overnight stay in Reykjavík.

Day 5 · Reykjavík · Golden Circle · Reykjavík

Breakfast in the hotel. Trip for the Golden Circle, the oldest day tour of the island. Next, Geysir Park, which showed these phenomena to the world and where the Strokkur geyser expels hot water over 35 meters high, followed by Gullfoss waterfall. The trip ends at the Thingvellir natural park, where it is possible to see the oldest parliament in the world, admire the natural beauty and experience the separation of the two tectonic plates. Overnight stay in Reykjavík.

Day 6 · Reykjavík · Keflavík airport

Transfer para o aeroporto.

Christmas Dinner: The traditional Christmas dinner includes sea soup, smoked salmon, traditional trout, Mývatn style lamb, different dishes, laufabrauð - leaf bread, Skyr and traditional cakes - products that have been part of this season for centuries in Iceland.



INCLUDED:

Hotel B&B 4 in Reykjavík - 3 nights

Hotel B&B 3 in Akureyri and Mývatn

English speaking guide

BUS w/ transfers (transfers from and to the international and domestic airports)

Flight Reykjavík - Akureyri · Flight Akureyri - Reykjavík

Traditional Christmas Dinner

Blue Lagoon

Fly Over Iceland

Mývatn Baths

Optional: 3 dinners



NEW YEAR IN ICELAND

December Group

5 Days • 4 Nights

from 29 December to 2 January

In recent years, Iceland has become internationally famous for its intense fireworks during New Year's Eve celebration. Icelanders take to the snow-covered streets and shoot off fireworks, for hours on end, then party the night away in glittering costumes and snow boots. Add to this the wonders of nature, with the Northern Lights above our heads. All of it, can only make this trip unforgettable!

Day 1 • 29 December (Wednesday) Arrival to Keflavík airport • Reykjavík

Arrival to Keflavík. Transfer to the hotel in Reykjavík.

Day 2 • 30 December (Thursday) Reykjavík • South Coast • Northern Lights tour • Reykjavík

Breakfast in the hotel. The tour along the south coast stops at the Skógafoss and Seljalandsfoss waterfalls. With the Eyjafjallajökull glacier (stopped the air traffic of Europe in 2010) on our side we head towards Vík. You will see the black sandy beaches and the 3 rocks of Reynisdrangur (3 petrified trolls). Return to the hotel in Reykjavík.



At 8 pm, Northern Lights BUS tour, in a dark place away from the city lights. (DURATION: 3 to 5 h)

Day 3 • 31 December (Friday) Reykjavík • Golden Circle • New Year's Eve Dinner • Bonfire Tour • Reykjavík

Breakfast in the hotel. Trip for the Golden Circle, the oldest day tour of the island. Next, Geysir Park, which showed these phenomena to the world and where the Strokkur geyser expels hot water over 35 meters high, followed by Gullfoss waterfall. The trip ends at the Thingvellir natural park, where it is possible to see the oldest parliament in the world, admire the natural beauty and experience the separation of the two tectonic plates. Return to the hotel in Reykjavík.

New Year's Eve Dinner (5-Course Dinner) + Bonfire Tour:

New Year's Eve dinner with selected wines, entertainment and live music. Bonfire Tour and return to the hotel. Then enjoy the fireworks on the 4th floor in one of the most beautiful party rooms in Reykjavík.



6.30 p.m Welcome aperitif

7.00 p.m Dinner is served

8.30 p.m Bonfire Tour to one of the biggest bonfires of New Year.

9.45 p.m Bonfire Tour Return

11.45 p.m Sparkling wine and canapés are served. Fireworks And ... New Year's Eve!

Day 4 • 01 January (Saturday) Reykjavík • Blue lagoon • Reykjavík

Breakfast in the hotel. Trip to Blue Lagoon, going through the lava fields which form the magnetic lunar landscape of the Reykjanes peninsula. Blue Lagoon is an open-air geothermal pool between 30°C and 40°C. It's one of the unique and famous attractions of Iceland. An open-air, geothermal Spa, which allows harmony between the body, mind and spirit. Return to the hotel in Reykjavík.

Day 5 • 02 January (Sunday) Reykjavík • Departure from Keflavík airport

Breakfast in the hotel. Transfer to the airport.

* Any changes to the programmes due to weather conditions or other force majeure will be safeguarded.

INCLUDED:

Hotel B&B 4 in Reykjavík 4 nights;

BUS w/ transfers: (transfers from and to the international airport and to the Blue Lagoon)

English speaking guide

New Year's Eve Dinner in Grand (5 plates)

Bonfire Tour;

Blue Lagoon;

Northern Lights Tour.



MAGICAL WINTER IN ICELAND

Group Package

7 Days · 6 Nights

Day 1 · Keflavík airport · Reykjavík

Transfer to Fosshotel in Reykjavík.

Day 2 · Reykjavík · West Coast · Snaefellsnes

Breakfast in the hotel and departure along the west coast to Deildartunguhver, the most powerful geothermal spring in Europe that pumps 180 litres of water per second at a temperature of 100°C. After we go to Reykholt, hometown of Snorri Sturluson, creator of the famous Icelandic sagas, and then to the beautiful waterfalls of Hraunfossar and Barnafoss. Finally, the tour heads towards the Snaefellsnes Peninsula, west of Borgarfjörður, with a short walk in the charming fishing village of Arnarstapi. After Hellnar, the journey continues to the black beach of Djúpalaunssandur, followed by Mount Kirkjufell, an iconic location where “Game of Thrones” was filmed and a favourite spot for many photographers. Overnight stay at Fosshotel with possibility to see the Northern Lights.

Day 3 · Snaefellsnes · Golden Circle · Selfoss

Breakfast in the hotel. and we will see the sun rising as we make our way towards the Golden Circle, the oldest day tour on the island. First stop at the

Thingvellir natural park, where it is possible to see the oldest parliament in the world, admire the natural beauty and experience the separation of the two tectonic plates. “Vikings” and “Games of Thrones” were filmed in southern Iceland. Then, Geysir Park, which showed these phenomena to the world and where the Strokkur geyser expels hot water over 35 meters high, followed by Gullfoss waterfall. Overnight stay in hotel Selfoss with possibility to see the Northern Lights.

Day 4 · Selfoss · South Coast · Vatnajökull

Breakfast in the hotel. Tour along the south coast stops at the Skógafoss and Seljalandsfoss waterfalls. With the Eyjafjallajökull glacier (stopped the air traffic of Europe in 2010) on our side we head towards Vík. You will see the black sandy beaches and the 3 rocks of Reynisdrangur (3 petrified trolls). Arrival in the region of Skaftafell National Park. Overnight stay at Fosshotel with possibility to see the Northern Lights.

Day 5 · Vatnajökull · Jökulsárlón Glacier Lagoon and ice cave with Super jeep · Reykjavík

Breakfast in the hotel. We will see the Jökulsárlón Glacier Lagoon, one of the most beautiful places



in the country. The huge blocks of ice that break off from the Vatnajökull glacier float in the lagoon until they reach nearby Diamond Beach, and then melt into the sea. The icebergs on the black sand beach look like diamonds and form a scene that seems surreal! Next, discover the fascinating ice caves with a Super jeep ride, accompanied by an experienced guide. The temperature inside the cave is below zero, so it is important that you are dressed accordingly. Return to the capital, crossing the Skaftafell National Park. Overnight stay at Fosshotel.



Day 6 · Reykjavík · Fly Over Iceland · Blue Lagoon · Reykjavík

Breakfast in the hotel. Trip to Blue Lagoon, going through the lava fields which form the magnetic lunar landscape of the Reykjanes peninsula. Blue Lagoon is an open-air geothermal pool between 30°C and 40°C. It's one of the unique and famous attractions of Iceland, an open-air, geothermal Spa, which allows harmony between the body, mind and spirit. City-tour during the morning. Highlights: the Höfði house, where in 1986 the non-

proliferation treaty between M. Gorbachov and Ronald Reagan was signed; the Viking ship-shaped sculpture - Sólfarid, after crossing the downtown we stop at the Hallgrímskirkja, Lake Tjörnin, the old harbour and Fly Over Iceland. Overnight stay at Fosshotel.

Day 7 · Reykjavík · Keflavik airport

Breakfast in the hotel. Transfer to the airport.

* Any changes to the programmes due to weather conditions or other force majeure will be safeguarded.

INCLUDED:

Arrival and departure transfers (airport / hotel / airport)

Hotel B&B

1 night in Snaefellsnes

1 night in Selfoss

1 night in Skaftafell

3 nights in Reykjavík

BUS/car for the whole trip with English speaking guide

1 night excursion to see the Northern Lights

Guided exploration of a natural ice cave in the Vatnajökull National Park with Super Jeep included

Entrance ticket to Fly Over Iceland

Entrance ticket to Blue Lagoon (includes towel, bathrobe, slippers and drink)

Tours as described in the itinerary

Folder with underlined map, brochures and information of Iceland



DISCOVERING THE NORTHERN LIGHTS

From Keflavík/ Reykjavík

7 Days • 6 Nights (Optional: 8 Days • 7 Nights)

With Private Driver Guide



Day 1 • Arrival to Keflavík airport • Reykjavík

Welcome and transfer to the hotel in Reykjavík.

Day 2 • Reykjavík • West Coast (Snaefellsness) • Reykjavík

Breakfast in the hotel and departure along the west coast to Deildartunguhver, the most powerful geothermal spring in Europe that pumps 180 litres of water per second at a temperature of 100°C. After we go to Reykholt, hometown of Snorri Sturluson, creator of the famous Icelandic sagas, and then to the beautiful waterfalls of Hraunfossar and Barnafoss. Finally, the tour heads towards the Snaefellsnes Peninsula, west of Borgarfjörður, with a short walk in the charming fishing village of Arnarstapi. After Hellnar, the journey continues to the black beach of Djúpálónssandur, followed by Mount Kirkjufell, an iconic location where “Game of Thrones” was filmed and a favourite spot for many photographers. Overnight stay in Reykjavík.

Day 3 • Reykjavík • Vatnajökull

Breakfast in the hotel. you will travel along Iceland’s South Coast on the narrow strip of lush farmland that cuts between mountains, glaciers, and the vast Atlantic Ocean. The journey includes stops at natural treasures, including Skógafoss waterfall, views of Skaftafell National Park, Diamond Beach, Eldhraun lava fields and Vatnajökull glacier to name but a few. Passing the southern edge of the mighty Vatnajökull Glacier roughly midway between Reykjavík and Jökulsárlón Glacier Lagoon offers magnificent views of glaciers, rivers and endless plains of sand. Vatnajökull Glacier National Park stretches over an area of 14,000 square km, or roughly ten times the

size of London. Overnight stay in the Vatnajökull region with possibility to see the Northern lights.

Day 4 · Jokulsárlón · Selfoss/Hvolsvollur

Breakfast in the hotel. Packed with icebergs in various shades of white and blue, the extraordinary scenery at Jökulsárlón Glacier Lagoon is sure to take your breath away. Seals are a fairly common sight both at the mouth of the lagoon and at the seaside beach. From Jökulsárlón you proceed to the Skeiðará Bridge monument, where you can see information about the fragility of man-made structures in the face of nature. In November 1996, a volcanic eruption destroyed the Skeiðará Bridge. The trip continues to Vík and Reynisfjara black sand beach, with a final stop at the Seljalandsfoss waterfall. Overnight stay in Selfoss/Hvolsvollur with possibility to see the Northern lights.

Day 5 · Selfoss/Hvolsvollur · Golden Circle · Reykjavík

Breakfast in the hotel. Trip for the Golden Circle, the oldest day tour of the island. Next, Geysir Park, which showed these phenomena to the world and where the Strokkur geyser expels hot water over 35 meters high, followed by Gullfoss waterfall. The trip ends at the Thingvellir natural park, where it is possible to see the oldest parliament in the world, admire the natural beauty and experience the separation of the two tectonic plates. Overnight stay in Reykjavík.

Day 6 · Reykjavík · City tour · Blue Lagoon · Reykjavík

Breakfast in the hotel. After the city-tour in Reykjavík

trip to the Blue Lagoon, going through the lava fields which form the magnetic lunar landscape of the Reykjanes peninsula. Blue Lagoon is an open-air geothermal pool between 30°C and 40°C. It's one of the unique and famous attractions of Iceland. An open-air, geothermal Spa, which allows harmony between the body, mind and spirit. Return to the hotel in Reykjavík. (entry fee at Blue Lagoon not included).

Day 7 · Reykjavík · Keflavík airport

Breakfast in the hotel. Transfer to the airport.

OPTIONAL: Day 8 · Reykjavík · Into the Glacier · Reykjavík

Breakfast in the hotel. We drive to Borgarfjörður with stops at Hraunfossar waterfall and Deildartunguhver thermal springs. Time to explore the glacier and the ice tunnel. The Longjökull glacier is 953 Km² in area. It is on this glacier that you will enter the middle of the ice through this hand made ice tunnel - Into the Glacier. An exciting and magical journey, drilling through the glacier to discover a magnificent world, surrounded by the dazzling blue ice. An old US Army missile launcher will be used for transportation, climbing to the top of the glacier into the ice tunnel. Overnight stay in Reykjavík.

INCLUDED:

Welcome at the airport

Private English speaking driver-guide (from arrival to departure)

B&B accommodation

Fuel for the whole trip; Basic car insurance - civiliability (CDW) · Super CDW and Gravel Protection Vehicle Insurance

Folder with brochures, programmes and maps





MAGICAL ICELAND: SKIING

From Keflavík/ Reykjavík

8 Days · 7 Nights

With Private Driver Guide

Winter in Iceland is very unique and seductive. This is the time of year when you can meet the magical beings - elves and goblins, legends and other mythical beings that fill the imagery of Icelandic culture and which literature, music and the arts in general replicate so well. The endless night, the mountains covered in white, the snow snaking along the roads and the Northern Lights invited you to enter a world beyond our time, resembling the magic of fairy tales.

Day 1 · Keflavík airport · Blue Lagoon · Reykjavík

Arrival to Keflavík. Transfer to the hotel in Reykjavík.

Day 2 · Reykjavík – city tour with Blue Lagoon · flight to Akureyri · Akureyri

Breakfast in the hotel. City-tour during the morning. Highlights: the Höfði house, where in 1986 the non-proliferation treaty between M. Gorbachov and Ronald Reagan was signed; the Viking ship-shaped sculpture - Sólfarid; after crossing the downtown we stop at the Hallgrímskirkja and Tjörninn lake.

Trip to the Blue Lagoon, going through the lava fields which form the magnetic lunar landscape of the Reykjanes peninsula. The Blue Lagoon is an open-air geothermal pool between 30°C and 40°C. It's one of the unique and famous attractions of Iceland. An open-air, geothermal Spa, which allows harmony between the body, mind and spirit. Flight to Akureyri, near arctic circle and considered the most beautiful town in Iceland. Overnight stay in Akureyri with possibility to see the Northern Lights.

Day 3 · Akureyri · Hlidarfjall Ski Resort · Akureyri

Breakfast in the hotel. City tour and transfer to the ski resort of Hlidarfjall, where you can ski and enjoy a panoramic view of the fjord. Possibility to see the Northern Lights. Overnight stay in Akureyri.

Day 4 · Akureyri · Godafoss · Mývatn Baths · Akureyri

Breakfast in the hotel. The trip starts in the fjord to Godafoss (the waterfall of the gods), symbol of the implementation of Christianity in Iceland, followed by lake Mývatn which is a natural conservation area and a privileged place for birdwatchers, photographers and nature lovers since 1974. Stop by the pseudo-craters of Skutusstadir and the petrified magma and basalt constructions of Dimmuborgir, which is believed to be inhabited by elves. The trip continues along the volcanic crater Hverfell, to the fumaroles and mud and lava pots of Namaskard, a place with orange ground which reminds us Mars, with an intense sulphur smell. Time for a bathe in the Mývatn geothermal baths, the water have microorganisms and minerals from the interior of the earth. Possibility to see the

Northern Lights. Overnight stay in Akureyri.

Day 5 · Akureyri · Hlidarfjall Ski Resort · flight to Reykjavík · Reykjavík

Breakfast in the hotel. Transfer to the ski resort of Hlidarfjall, where you can ski and enjoy a panoramic view of the fjord. At the end of the day, domestic flight back to Reykjavík. Overnight stay in Reykjavík.

Day 6 · Reykjavík · Golden Circle · Selfoss

Breakfast in the hotel. Trip for the Golden Circle, the oldest day tour of the island. Next, Geysir Park, which showed these phenomena to the world and where the Strokkur geyser expels hot water over 35 meters high, followed by Gullfoss waterfall. The trip ends at the Thingvellir natural park, where it is possible to see the oldest parliament in the world, admire the natural beauty and experience the separation of the two tectonic plates. Overnight stay in Selfoss with possibility to see the Northern Lights.

Day 7 · Selfoss · South Coast · Reykjavík

Breakfast in the hotel. The tour along the south coast stops at the Skógafoss and Seljalandsfoss waterfalls. With the Eyjafjallajökul glacier (stopped the air traffic of Europe in 2010) on our side we head towards Vík. You will see the black sandy beaches and the 3 rocks of Reynisdrangur (3 petrified trolls). Overnight stay in Reykjavík.

Day 8 · Reykjavík · Keflavík airport

Breakfast in the hotel. Transfer to the airport.

* Any changes to the programmes due to weather conditions or other force majeure will be safeguarded.

Hlidarfjall Ski Resort: Is located on the slopes of the mountain that gives it its name with a privileged view of the largest fjord in the country (Eyjafjörður) and the town of Akureyri. The ski resort is between 506 m and 1100 m altitude. It started operating in 1962 and currently has 28 slopes of different difficulty levels, served by 8 chairlifts/elevators. It is considered the best Icelandic ski resort, not only for being the best equipped, but also for the beauty of the place, the quantity and quality of the snow and the surrounding landscape. Akureyri, situated on the shore of the fjord, is considered the most beautiful and welcoming town in Iceland and has all the necessary equipment to make your holiday unforgettable. It is a privileged place to be surprised by the Northern Lights.

INCLUDED:

Airport welcome

B&B accommodation

English speaking Driver Guide (from arrival until departure)

Car for the whole trip

Fuel

Basic car insurance - civil liability (CDW)

Super CDW and Gravel Protection car insurance

Flights Reykjavík - Akureyri - Reykjavík

Blue Lagoon

Mývatn Baths

Entrance to the ski resort (including hire of helmet, boots and skis)

GREENLAND

Greenland Packages: Possible extensions for Individuals and Groups - Add to Programmes and Packages in Iceland



KULUSUK

From Reykjavík to East Greenland

2 Days · 1 Night

It is only a 2-hour flight from Reykjavik to Greenland. Be prepared to experience the unique atmosphere at Greenland's beautiful East Coast, home of the Kulusuk Inuit. You will see huge glaciers and floating icebergs. Our guides will escort us from the airport to the engaging village Kulusuk (3 km/1,8 mile walk) where we can stroll about and meet some of the 250 local residents and view their quality crafts. Kulusuk is the gateway to East Greenland and the small settlement is an excellent introduction to the way of life in a settlement in the Ammassalik area. Kulusuk lies on a small rocky island between saw-toothed mountains and extensive fjords, and it is almost always surrounded by icebergs and a glittering Arctic Ocean. In Kulusuk you will find some of the east coast's most skilled craftsmen, whose tupilaks are of exceptional quality. Traditional hunting and fishing are still essential sources of income for many families in the settlement.

In the tiny village of Kulusuk you will get a good glimpse of the everyday life on the east coast of Greenland. You will walk through this colorful

village, visit a private museum that presents many of the arctic traditions used by the pioneers that inhabited this remote area, visit the beautiful church of Kulusuk and if the weather allows see the traditional Inuit drum-dancing show. All in all, a rich presentation of modern life in a remote arctic village on the east coast of Greenland.

On our return flight to Reykjavík we enjoy a spectacular view over huge glaciers and floating icebergs.

* Any changes to the programmes due to weather conditions or other force majeure will be safeguarded.

INCLUDED:

Flight: Reykjavík · Greenland (Kulusuk) · Reykjavík (taxes included);

1 Night in Greenland (hotel with dbl room and private bath);

Full board;

1 night in Iceland/Reykjavík (hotel with dbl room and private bath);

Transfers between airports included (Iceland and Greenland);



KULUSUK AND AMMASSALIK

From Reykjavík to East Greenland

3 Days · 2 Nights

Ammassalik is known to local residents as Tasilaq which in East Greenlandic means something resembling a lake. Ammassalik is the largest village in East Greenland with about 1,400 residents. The town has a picturesque setting in a fjord surrounded by high mountains and bisected by a small river that flows through the town.

As it is only just over 100 years since the first Europeans came to the area, the traditional Inuit culture still plays an important role in day-to-day life. Ammassalik is only a 10-minute helicopter ride from Kulusuk, but this short flight is one of the most scenic expeditions imaginable as you cross the ice-filled sea separating these two mountainous islands.

On our return flight to Reykjavík we enjoy a spectacular view over huge glaciers and floating icebergs.

* Any changes to the programmes due to weather conditions or other force majeure will be safeguarded.



INCLUDED:

Flight: Reykjavík · Greenland (Kulusuk) · Reykjavík (taxes included);

Helicopter: Kulusuk · Ammassalik · Kulusuk;

2 Nights in Greenland (hotel with dbl room and private bath);

Full board;

1 night in Iceland/Reykjavík (hotel with dbl room and private bath);

Transfers between airports included (Iceland and Greenland);

NUUK

From Reykjavík to Nuuk

3 Days · 2 Nights

Greenland's capital Nuuk is a city of vitality, surrounded by immense nature and filled with vibrant Greenlanders leading fascinating lives of old traditions, modern twists, and diverse influences. Home to gourmet restaurants, fashion boutiques, and the Northern Lights inspired Katuaq Cultural Center, Nuuk is the center of modern Greenland. However, a stroll through the Old Harbor shows that history and traditions remains strong.

* Any changes to the programmes due to weather conditions or other force majeure will be safeguarded.

INCLUDED:

Flight: Reykjavík · Greenland (Nuuk) · Reykjavík (taxes included);

2 Nights Accommodation B&B

Transfers;

Boat Tours day 1 and day 2;

National Museum;

All Taxes

24 h emergency phone

Day 1 · Welcome to Capital of Greenland

Arrival in the arctic capital; Nuuk. After pick up at airport we take you on a city sightseeing for 1½ hrs. ending at your accommodation. Late afternoon the boat leaves for Qooqqut. Here you enjoy delicious food in the restaurant Qooqqut NUAN. The boat tour Nuuk – Qooqqut takes one hour in a closed boat where you pass high mountains, waterfalls and maybe seals and whales. After dinner the boat leaves for Nuuk at app. 8 pm.

Day 2 · Safari in Capital of Adventure and Wildlife

This day takes you to the glacier Narsap Sermia in the bottom of the Icefiord. It takes the fast and closed boat app. 2 hours to get to the Icefiord and another hour to get close to the glacier. The amounts of ice in the water - determines how close to the glacier you can come. Returning from the Icefiord you visit the colorful village of Qoornoq, where there is a ½ to 1 hour stay. Departure 8 a.m. and return at 4 pm.

Day 3 · Goodbye Greenland

Depending on when your departure flight takes off, you have some time for visiting the National Museum and for a stroll in the old part of town, the colonial harbor. Nuuk also has a variety of shops including several very fine gift and souvenir shops. Transfer from accommodation to airport is included in this package.



NUUK

From Reykjavík to Nuuk

4 Days · 3 Nights

Greenland’s capital Nuuk is a city of vitality, surrounded by immense nature and filled with vibrant Greenlanders leading fascinating lives of old traditions, modern twists, and diverse influences. Home to gourmet restaurants, fashion boutiques, and the Northern Lights inspired Katuaq Cultural Center, Nuuk is the center of modern Greenland. However, a stroll through the Old Harbor shows that history and traditions remains strong.

INCLUDED:

- Flight: Reykjavík – Greenland (Nuuk) – Reykjavík (taxes included);
- 3 Nights Accommodation B&B;
- Transfers;
- Boat Tours day 1 and day 2;
- National Museum;
- Art Museum;
- All Taxes;
- 24 h emergency phone;

Day 1 · Welcome to the Capital of Greenland

Arrival in the arctic capital; Nuuk After pick up at airport we take you on a city sightseeing for 1½ hrs. ending at your accommodation. Late afternoon the boat leaves for Qooqqut. Here you enjoy delicious food in the restaurant Qooqqut NUAN. The boat tour Nuuk – Qooqqut takes one hour in a closed boat where you pas high mountains, waterfalls and maybe seals and whales. After dinner the boat leaves for Nuuk at app. 8 pm.

Day 2 · Safari in Capital of Adventure and Wildlife

This day takes you to the glacier Narsap Sermia in the bottom of the Icefiord. It takes the fast and closed boat app. 2 hours to get to the Icefiord and another hour to get close to the glacier. The amounts of ice in the water - determines how close to the glacier you can come. Returning from the Icefiord you visit the colorful village of Qoornoq, where there is a ½ to 1 hour stay. Departure 8 a.m. and return at 3 pm.

Day 3 ·Free Day in Capital of Nature and Beauty

You can spend the day exploring the surroundings of Nuuk with a 4 to 5 hour hike between the mountains of Quassussuaq/Lille Malene and Ukkussissaq/Store Malene. These mountains magnify the perspective that even the expanding capital city can be dwarfed by Greenland’s powerful nature. You can explore Nuuk – the National Museum for a stroll in the old part of town, the colonial harbor. Visit the Art museum and culture

house Katuaq. You can also visit a local family for coffee and cake (kaffemik).

Day 4 ·Goodbye Greenland

Depending on when your departure flight takes off, you have some time for visiting stores including several very fine gift and souvenir shops. Transfer from accommodation to airport is included in this package.

* Any changes to the programmes due to weather conditions or other force majeure will be safeguarded.



NUUK AND ILULISSAT

From Reykjavík to Nuuk and Ilulissat

8/9 Days · 7/8 Nights

The arctic town of Ilulissat is situated by the amazing Ilulissat Ice Fjord which is on the list of UNESCO World Heritage.

Day 1 · Welcome to the Capital of Greenland

Arrival in the arctic capital, Nuuk. Transfer to accommodation at app. 6 pm. For dinner choose among a variety of fine restaurants in heart of Nuuk

Day 2 · Safari in Capital of Adventure and Wildlife

This day starts with a 1½ hour city tour which ends at the National Museum. After lunch boat tour through the beautiful Nuuk Fjord to the fishing and hunting settlement Kapisillit. After some sightseeing in Kapisillit the boat tour continues to the restaurant Qooqqut Nuan, in the small fiord of Qooqqut. Great chefs prepare food with local ingredients of fish and caribou/reindeer, with a twist of Thai cuisine. Departure 1 p.m. and return between 8 or 9 pm.

Day 3 · Free day in the Capital of Nature and Beauty

Today you can spend the day as you wish in Nuuk. See optional tours*. Nuuk is the center of commercial

activities in Greenland and there are great opportunity to buy local handicraft of bone and soapstone, and fur of reindeer and seal. In the afternoon at 9 p.m. you depart for Ilulissat with the ferry.

Day 4 · Full day on the ferry on the coast

Enjoy the day on the ferry between Nuuk and Ilulissat together with local travelers. The trip takes you to the towns of Maniitsoq, Sisimiut and Aasiaat where it is possible to take a small walk in some of the places. Along the way you will for sure see whales, seals and lots of sea birds.

Day 5 · Welcome to Ilulissat - the capital of ice

Arrival in Ilulissat at 1 pm and transfer to your hotel. The afternoon can be used for strolling around town, visiting the museum and taking in the sights. At 10 pm you depart for the 2½ hour midnight boat tour to the Icefiord, between the gigantic icebergs.

Day 6 · Day tour to Eqip Sermia - the calving glacier

Today's boat tour takes you to the glacier at Eqip Sermia. Here it is possible to get very close to the glacier front, where you can enjoy the fantastic scenery for app. two hours. Lunch will be served while you are waiting for the ice to calve, in the ice secured and modern boat. You will on the way, pass steep mountains with bird life and waterfalls. You will also pass a settlement called Oqaatsut, and big fiord system called Pakitsoq, where whales and seals often are seen.

Day 7 · Free day in Ilulissat

There is no fixed program for this day but optional tours are available eg. to the village of Ilimanaq or a hike to the settlement ruins of Sermermiut, directly by the Icefiord. A walk to the harbor can also be recommended. Boats in all sizes arrive all day to sell their catch of halibut and

shrimp to the two local factories.

Day 8 · Goodbye Greenland

Today it's time to say goodbye to Greenland. Your flight to Iceland leaves in the morning. Transfer from the hotel to the airport.

* Any changes to the programmes due to weather conditions or other force majeure will be safeguarded.

INCLUDED:

Flight: Reykjavík · Greenland · Reykjavík (taxes included);

7 Nights Accommodation B&B;

Boat Tours to Kappissillit and Qooqqut in Nuuk;

National Museum (Nuuk);

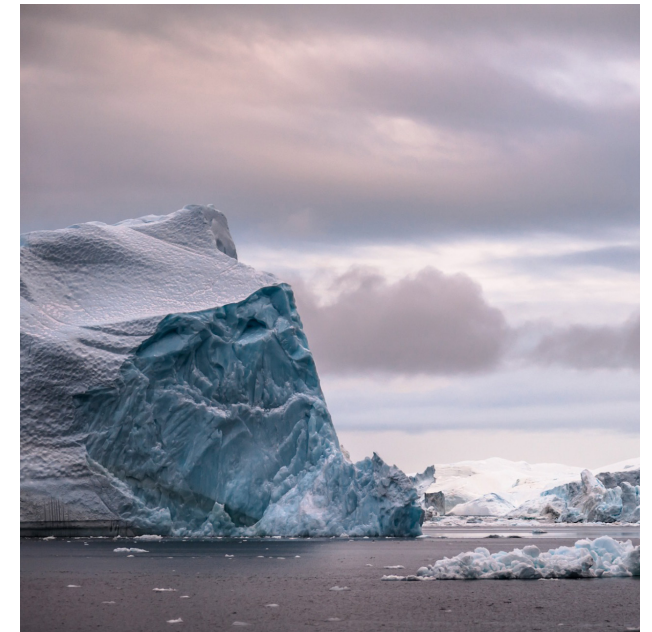
Ferry from Nuuk to Ilulissat;

Boat tours to see midnight sun in the Icefiord and Egi Glacier in Ilulissat;

All Transfers;

All Taxes;

24 h emergency phone;



ACTIVITIES

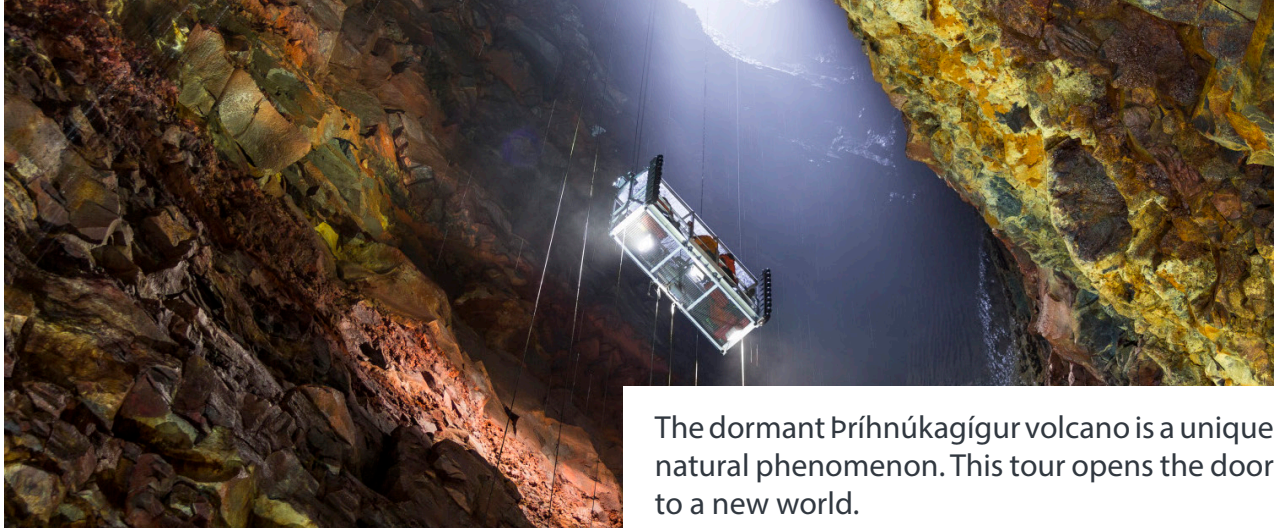


INSIDE THE VOLCANO

Optional Activity

Moderate Difficulty

Approx. 5 Hours to 6 Hours Duration



The dormant Þríhnúkagígur volcano is a unique natural phenomenon. This tour opens the door to a new world.

To be able to experience this wonder, all you need is the willingness to do a moderate 45–50 minute hike (to get to the crater) and the guts to descend 120 meters/400 feet to the bottom of the crater in an open cable lift. The hike to the volcano is an integral part of the tour, not only because of the breathtaking scenery, but also because it's the only way of getting to the base of the volcano. Þríhnúkagígur volcano is dormant – it last erupted over 4,000 years ago. There are no indications of it erupting again in the near future. The volcano's name, mostly unpronounceable for anyone other than locals, would be directly translated as 'Three Peaks Crater'. We need to walk approximately 3.5 km (2 miles) each way. The walk usually takes around 45–50 minutes (depending on the condition of people in the group). A guide will be with you at all times during the walk.

NOTE: Around 45 m inside the crater. The walk usually takes around 45–50 minutes · All safety gear, helmets, harnesses, etc. included · Will be served vegetarian soup.



FLY OVER ICELAND

Optional Activity

Approx. 40 m Duration

NEW: Fantastic Opcional in Reykjavik!
Fly Over Iceland - You will hang suspended, feet dangling, before a 20-metre spherical screen while our film whisks you away on an exhilarating journey across Iceland. Special effects, including wind, mist and scents, combine with the ride's motion to create an unforgettable experience.



ICELANDIC HORSE RIDING

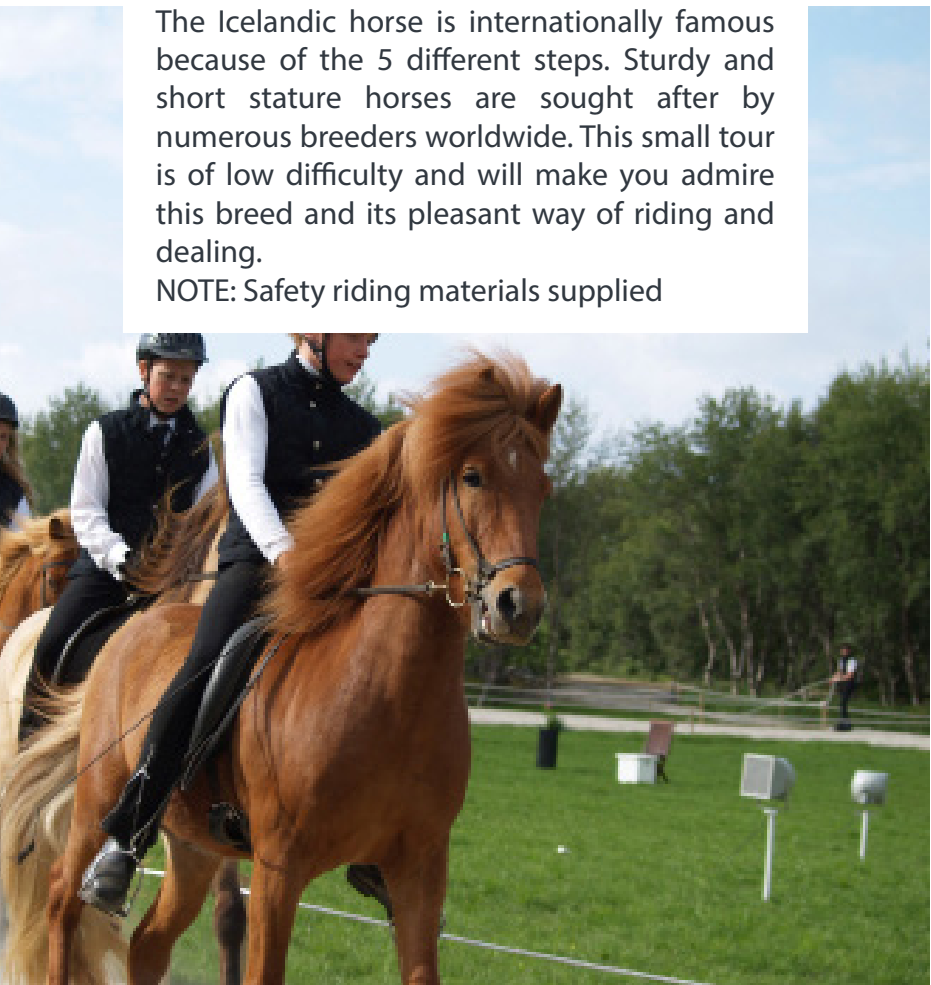
Optional Activity

Easy Difficulty

Approx. 1,5h to 2h Duration

The Icelandic horse is internationally famous because of the 5 different steps. Sturdy and short stature horses are sought after by numerous breeders worldwide. This small tour is of low difficulty and will make you admire this breed and its pleasant way of riding and dealing.

NOTE: Safety riding materials supplied



WHALE WATCHING

Optional Activity

Easy Difficulty

Approx. 3 Hours de Duration

The whale watching takes place in Reykjavík, or if it is an itinerary around Iceland, in the village of Husavík (whale watching capital). The most sighted whales are humpback whales, common whales, minke whales and sometimes you can spot the blue whale or orca.



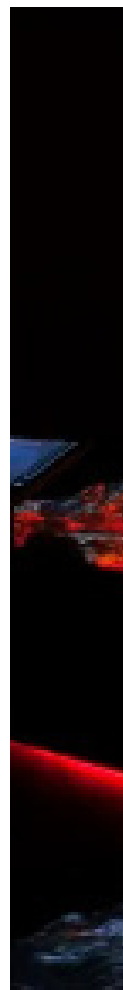
LAVA CENTER

Optional Activity

Indefinite Duration

Lava Center is an interactive, high-tech educational exhibition that portrays volcanic activity, earthquakes and the creation of Iceland over millions of years.

NOTE: Ask us for a group quotation!



INTO THE GLACIER

Optional Activity

Easy Difficulty

Approx. 3 Hours to 4 Hours Duration

The world's largest man-made ice tunnel – Into the Glacier!

Into the Glacier - this activity access to the largest man-made ice tunnel in the world. The ice tunnel and the caves are located high on Iceland's second largest glacier, Langjökull, where you will have an amazing opportunity to explore the glacier and see it from the inside. To journey inside one of Iceland's frozen giants is truly a once-in-a-lifetime experience. This activity is on/in Langjökull (the Long Glacier). Langjökull is the second largest glacier in Iceland. It covers an area of about 950 km² and most of it rises between 1200 and 1300 m above sea level. It rests on a massif of hyaloclastite mountain.

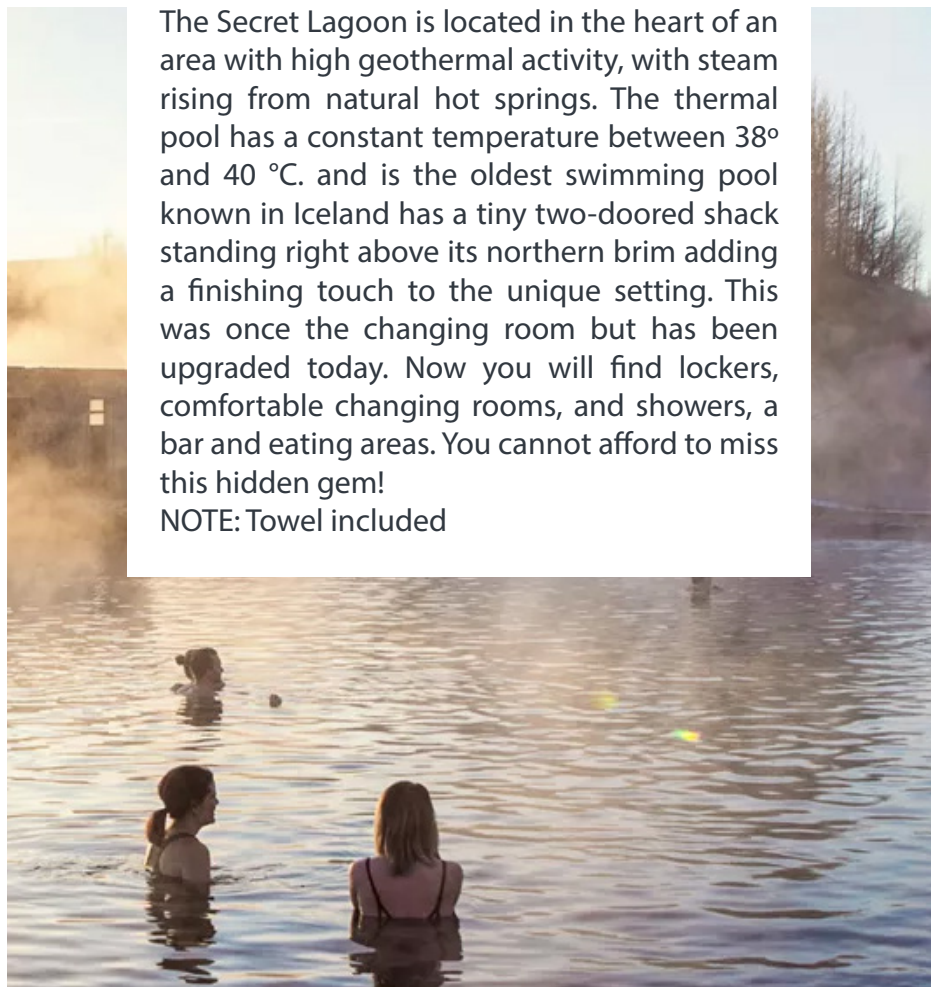


SECRET LAGOON

Optional Activity

The Secret Lagoon is located in the heart of an area with high geothermal activity, with steam rising from natural hot springs. The thermal pool has a constant temperature between 38° and 40 °C. and is the oldest swimming pool known in Iceland has a tiny two-doored shack standing right above its northern brim adding a finishing touch to the unique setting. This was once the changing room but has been upgraded today. Now you will find lockers, comfortable changing rooms, and showers, a bar and eating areas. You cannot afford to miss this hidden gem!

NOTE: Towel included



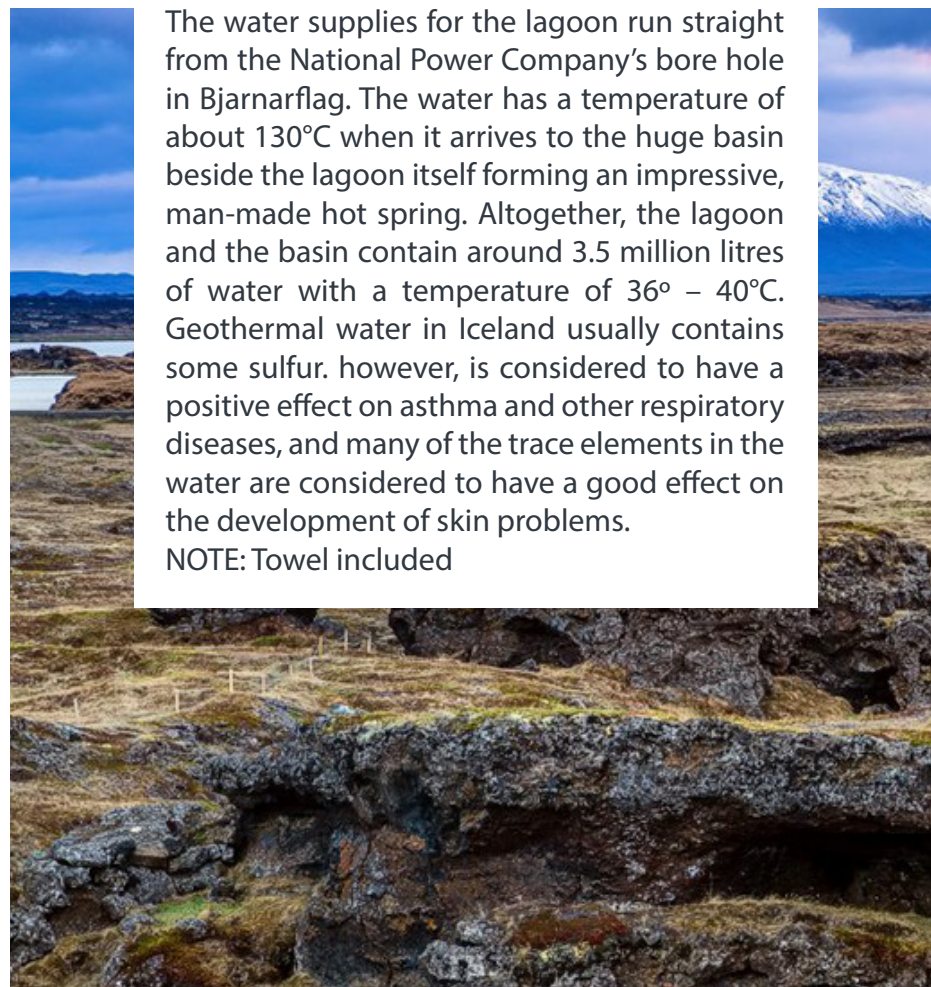
MÝVATN NATURE BATHS

Optional Activity

Indefinite Duration

The water supplies for the lagoon run straight from the National Power Company's bore hole in Bjarnarflag. The water has a temperature of about 130°C when it arrives to the huge basin beside the lagoon itself forming an impressive, man-made hot spring. Altogether, the lagoon and the basin contain around 3.5 million litres of water with a temperature of 36° – 40°C. Geothermal water in Iceland usually contains some sulfur. however, is considered to have a positive effect on asthma and other respiratory diseases, and many of the trace elements in the water are considered to have a good effect on the development of skin problems.

NOTE: Towel included



GLACIER WALK WITH CRAMPONS

Optional Activity

Easy/Moderate Difficulty

Approx. 3 Hours to 3,5 Hours Duration



Along the way to the glacier, we will have a good view of the glacier lagoon and the area around the glacier. We start with a safety briefing and a short lesson how to use the crampons and the ice pick on the glacier walk. The glacial landscape is amazing and dynamic, including crevices, sinkholes and small black volcanic sandhills. Sometimes it's possible to take a look at the small holes or enter the caves. In winter the ice is blue and clear, the surface mostly covered by snow. During the summertime, the ice becomes more white and the volcanic ash which forms various patterns in the landscape is more visible. As previously mentioned the glacial landscape changes day by day which makes it even more interesting to see and explore. Sólheimajökull glacier is the ideal place to view geomorphology and the effects of global warming on glaciers. NOTE: Crampons, helmet and hatchet provided · Offer of tea, water or coffee on the glacier

SIGHTSEEING FLIGHT

Optional Activity

Approx. 1,45 Hours Duration

This is a magnificent tour over the world-famous Eyjafjallajökull glacier and the spectacular area of the south west part of Iceland. Other places of interest en route include Hekla, another famous Icelandic volcano; The Þingvellir National Park, site of the world's oldest parliament; Geysir, one of the world's outstanding geothermal areas; the Gullfoss waterfall; The Þórsmörk Nature Reserve; and the rhyolite peaks of Landmannalaugar.

NOTE: capacity of 4 persons aircraft (minimum 2 PAX)



SNOWMOBILE

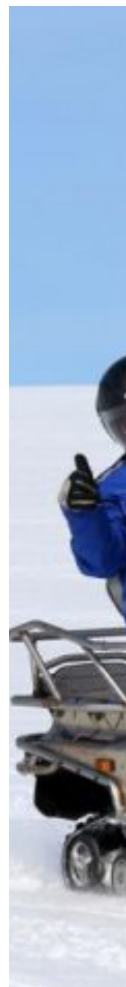
Optional Activity

Easy Difficulty

Approx. 2 Hours Duration

The snowmobile tour is perfect for those who are looking for a scenic fun ride on a glacier and want to explore the wilderness and breathtaking view over South Iceland. The length of the tour is suitable for first time riders. The tour starts with a short briefing and dressing up at the main base. Next we board a real glacier truck and head up the mountain towards the glacier and the location of the snowmobiles. The snowmobile ride takes you to the top of Mýrdalsjökull glacier. This glacier adventure tour will give you an opportunity to photograph and film the scenery and the nature, for a remembrance of a great day in wild and pure Iceland. Please note: All drivers must be 17 years of age or older and have a full, valid driver's license. A learner's permit, tractor, or motorcycle license is not sufficient according to Icelandic law.

NOTE: Footwear, suits and helmets provided for the activity



SAILING YACHT: ICELAND AND GREENLAND

Optional Activity

(Charter Trip Adventure)

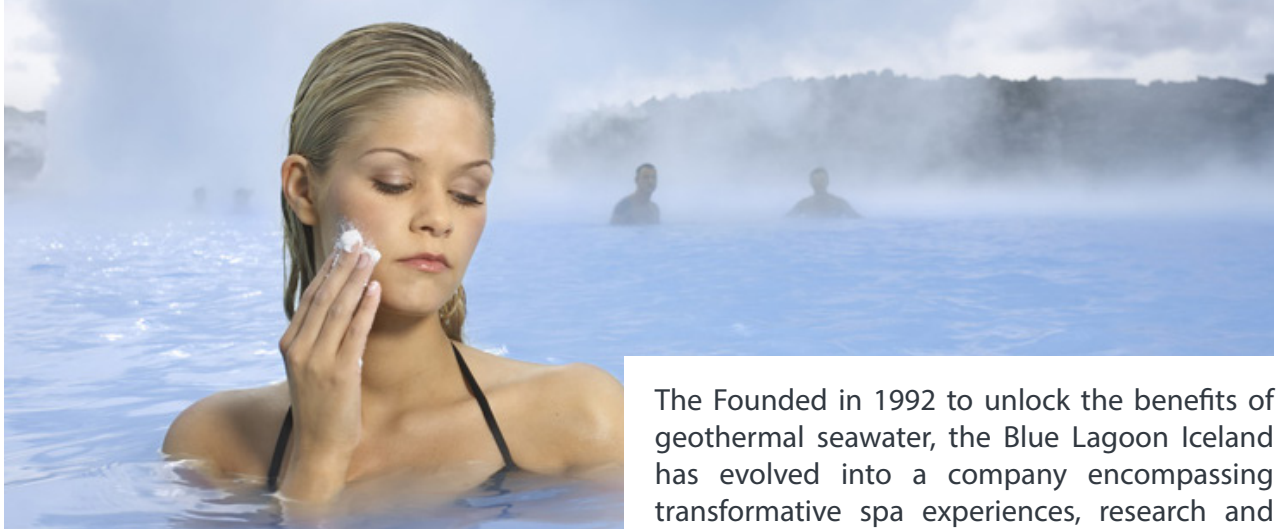


Come and Cruising the high latitudes between 63° and 73° north, where the sun does not set in the summer and the aurora borealis lights up the skies in the winter. This is a Yacht charter service managing a range of sailing activities in Iceland and Greenland. When organizing adventures in this part of the world, it is essential to have the experience of operating in the harsh conditions of the Arctic; we know the environment and we offer local expertise. The sailing yacht with Ice Tourism is built and coded for 12 guests and three crew, operating as a highly successful luxury crewed charter business on Iceland and Greenland. For overnight voyages, she offers 11 berths over five separate cabins, all en-suite with showers, for 8 guests and three crew members.

The yacht is an Oyster 68. Designed by Holman and Pye and built in 1989 by Oyster Marine in England, the yacht is an excellent cruising yacht, recognised throughout the sailing world for quality, comfort and performance. With core values of strength, seaworthiness and a multitude of practical, seamanlike features, she provides a secure environment for adventurous cruising. The crew is looking forward to welcoming you on board and we believe the expedition will be unforgettable. On board you will find the captain with a dedicated and professional approach to your safety, sailing and navigation as well as first mate and guide, with his passion for sailing and love of nature. Finally, the chef whose love for cooking ensures you will experience everything the local environment has to offer.

BLUE LAGOON

Optional Activity



The Founded in 1992 to unlock the benefits of geothermal seawater, the Blue Lagoon Iceland has evolved into a company encompassing transformative spa experiences, research and development, sustainability, culinary enjoyment, a renowned line of skin care, and the convergence of hospitality and wellness. In 2012, the company's iconic centerpiece—the Blue Lagoon—was named one of 25 wonders of the world by National Geographic, propelling the majestic, healing waters into the upper echelons of global travel destinations. Two thousand meters within the earth, ocean water and freshwater converge in a tectonic realm of searing heat and extreme pressure, creating geothermal seawater. Drawn to the surface through geothermal extraction wells, the water emerges enriched with silica, algae, and minerals—the bioactive elements that endow this unique fluid with its healing, rejuvenating, nourishing abilities. Blue Lagoon's surrounding landscape—the moss lava field—was created in 1226 AD. In order to protect the lava and the delicate, centuries-old greenery, paths were created, enabling visitors to wander through the enchanting environment without destroy the nature.

NOTE: Towel always included · Massages by appointment · recommended for the treatment of psoriasis

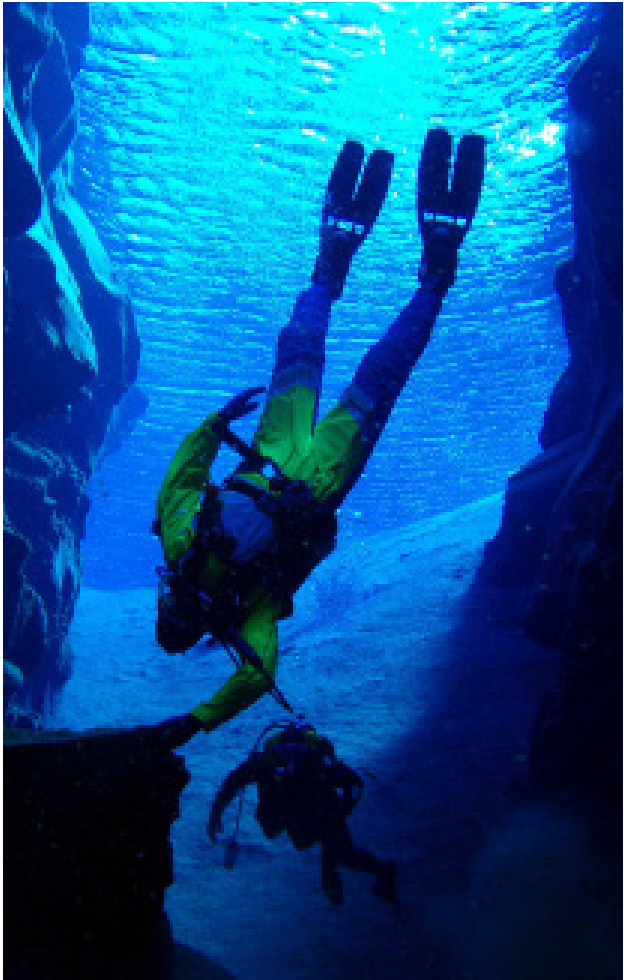


BETWEEN THE CONTINENTS

Optional Activity

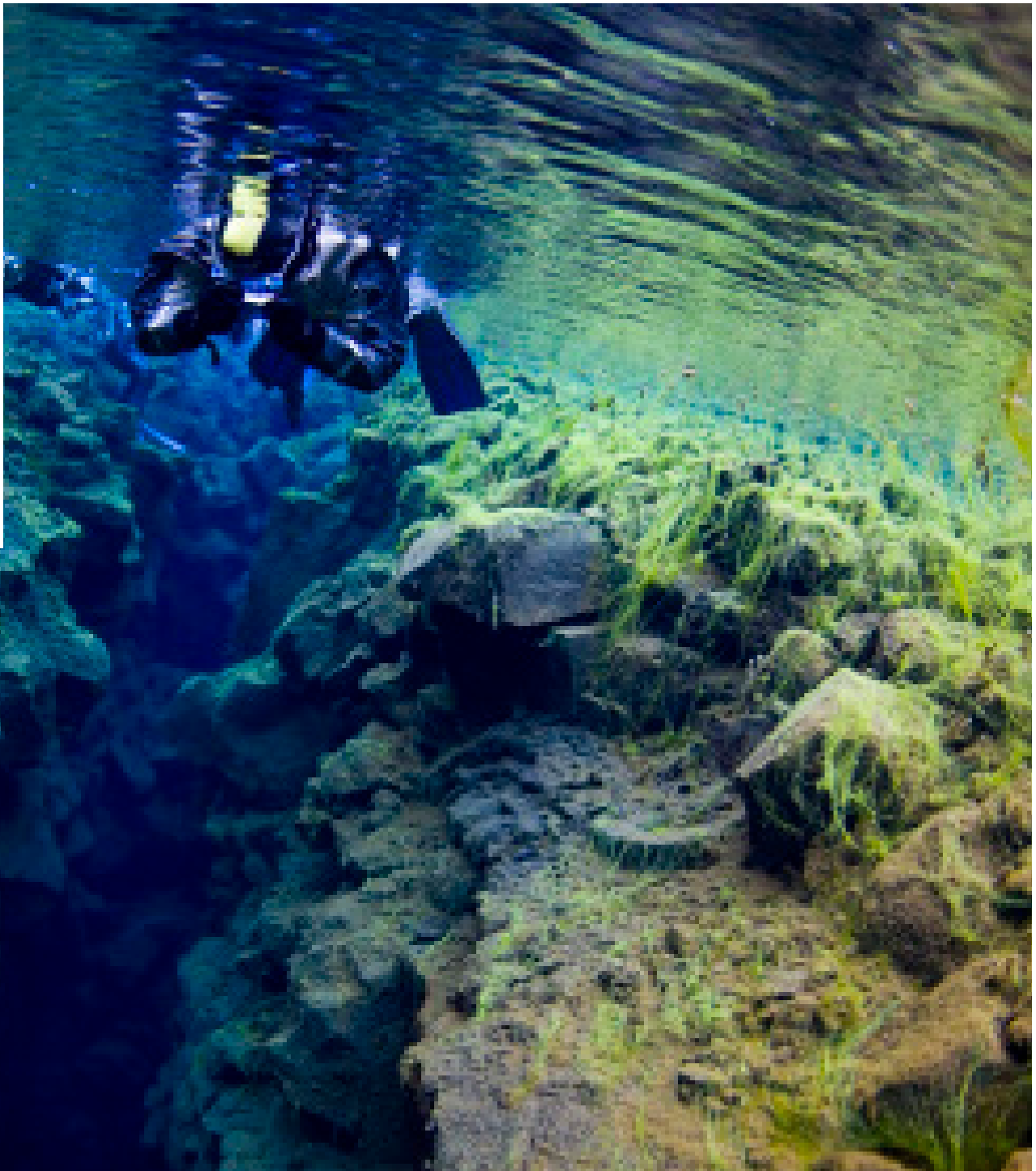
Silfra Diving or Snorkeling

Silfra Snorkeling: Immerse yourself in the clearest water in the world and float between two continents in Iceland! A snorkeling adventure in the famous Silfra fissure is an unforgettable experience, there is a reason TripAdvisor chose our Snorkeling Tour the No.4 experience in the world! Approx. 2,5 Hours Duration



Silfra Diving: Is a must for every dry suit diver. You will dive into the most unique body of water in the world with unparalleled visibility. Silfra is a crack in the Earth ripped open by the movement of the North American and Eurasian tectonic plates. The crystal clear glacial water providing over 100 meters of underwater visibility has been filtered for decades through underground lava rocks. The underwater scenery that you experience on your Diving Tour is found nowhere else on Earth. Approx. 3 Hours Duration

NOTE: For Diving in Silfra you need to have a SCUBA dive certification card (PADI Open Diver Water or equivalent) and Proof of dry suit dive certification or 10 logged dry suit dives within two years of tour date.



ICE TOURISM TEAM

Head Office in Iceland:

Síðumúli 29 - 108 Reykjavík · Phone: 003545888900 | Mobile/Whatsapp: 003546973085
icetourism@icetourism.com

Iberic Office in Portugal:

Av. do Lidador da Maia 506 Sala - 4, 4425-116 Maia| Phone: 00351914714834 | ivo@icetourism.com

Representation Office in Belgium:

Boezingestraat 80-8920 Langemark, Poelkapelle| Mobile: 0032456236980 frank@icetourism.com

General Contacts:

Email: icetourism@icetourism.com | Phone: +354 5888900 | Mobile/Whatsapp: +354 6973085
Instagram: www.instagram.com/icetourism | Facebook: www.facebook.com/icetourism
Website: www.icetourism.com



Egill Örn Arnason
Chairman of the Board
egill@icetourism.com
+3545888900 (IS)



Omar Barine
Projects Manager
omar@icetourism.com
+3545888900 (IS)



Ivo Martins
Operations Manager
ivo@icetourism.com
+3546973085 (IS)



Gyrdir Egilsson
Sales and Project Manager
gyrdir@icetourism.com
+ 3545888900 (IS)



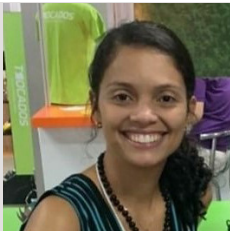
Anna Silfa
Accounting Department
anna@icetourism.com
+3545888900 (IS)



Frank Coulier
Comercial Manager
frank@icetourism.com
+32456236980 (BE)



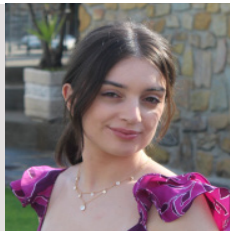
José Macedo
Website
jose@icetourism.com
+3546973085 (IS)



Sicy Melo
Social Web Media
sicy@icetourism.com
+3546973085 (IS)



Catarina Martins
Catalogs Design
catarina@icetourism.com
+351911977461 (PT)



Filipa Neves
Iberian Delegation Agent
filipa@icetourism.com
+ 351911977461 (PT)



Natalia Mariñas
Sales Latin America
natalia@icetourism.com
+5491130114325 (AR)



Miguel Escobedo
Sales USA
mike@icetourism.com
+1(281)8982699 (AR)

GENERAL CONDITIONS

ORGANIZING AGENCY

The organization and commercialization of the trips included in this document was carried out by Ice Tourism ehf, under the registered trademark Ice Tourism with head office at Sidumúli, nr. 29, 108 Reykjavík - Iceland, Kennitala nr. 650820-0960, registered at Reykjavík - Íslândia.

REGISTRATIONS

Upon registration, the client must deposit the stipulated signal of 30%, settling the remaining amount as follows:

- Individuals: The remaining amount must be paid within 10 days before the arrival of the client(s) to Iceland.
- Groups (8 or more persons): The remaining amount must be paid one month before the arrival of the group to Iceland.

If the reservation is made within the 10 days prior to the date of departure, the total price of the trip must be paid at the time of registration, this being conditional on obtaining from the suppliers the confirmation of reservations for all services. Ice Tourism ehf reserves the right to cancel any registration whose payment has not been made under

the above conditions. Reservations are subject to suppliers confirmation of all services.

DOCUMENTATION

The client must have in good condition all personal or family documentation requested by Ice Tourism (identity card, authorization for minors, passports, visas, vaccination certificate and other possibly required). Ice Tourism ehf declines any responsibility for the refusal of visa authorization or the non-authorization of entry in Iceland in case the client does not have the requested documentation in order. In these cases, the conditions set out in the cancellation/waiver clause apply, and the client is also responsible for all costs that such a situation may entail. In order to obtain medical assistance in Iceland, foreign citizens must hold the respective European Health Insurance Card (EHIC). When booking your trip, you give your permission to Ice Tourism to request and use your personal data for the purpose of preparing and booking the trip, under the General Data Protection Regulations.

CHANGES AT COSTUMER'S REQUEST

If possible, whenever a client wishes to change his trip to another period, he must pay the fee as change expenses. However, if the request for change occurs 10 days or less before the date of departure of the planned trip, or if the service providers do not accept the change, the customer is subject to the expenses and charges provided for in the cancellation item. Once the trip has begun, if a change to the contracted services for reasons not attributable to Ice Tourism is requested (e.g. increase in accommodation nights, change of flight) the prices of the tourist services may not correspond to those published in the program that motivated the contract.

TRANSFER OF REGISTRATION

The client may assign his or her registration, being replaced by another person who meets all the conditions required for the trip, provided that he or she informs Ice Tourism in writing at least seven days in advance. The assignment of the registration will hold you jointly and severally liable for the payment of the travel price and the additional charges incurred.

BAGAGE

Ice Tourism ehf is not responsible for the customer's luggage and for any loss or deterioration during or between international flights because they are not part of our programs. If a luggage accident occurs during the period of our services due to a fault not attributable to the client, the client has the obligation to complain to the service providers, at the time of subtraction, deterioration or loss. Any insurance on the luggage can only be activated upon the presentation of the proof of claim.

CHANGES MADE BY THE AGENCY

In case of force majeure Ice Tourism can change the order of the routes, the departure times or replace any of the planned hotels with other hotels of a similar category and location. If unforeseen circumstances oblige to suspend any trips, the clients will always be entitled to a refund of the amounts paid.

CANCELLATION OF THE PROGRAM BY THE AGENCY

Ice Tourism ehf reserves the right to cancel the trip if the number of participants is less than the minimum required. In these cases, the client will be informed in writing of the cancellation within 10 days before the departure date.

CHANGE IN PRICE

The prices in the program are based on the costs of services and exchange rates in effect on the date of printing of this program, and are subject to change as a result of changes in transportation or fuel costs, duties, taxes, fees and exchange rate fluctuations. Whenever there is a change in the price of the trip, the customer will be immediately informed and invited to, within the period set, accept the increase verified or cancel his registration under the same terms and conditions as those provided under the heading “changes made by the agency”.

REFUNDS

Once the trip has started, no refund is due for services not used by the customer. Failure to provide services under the travel program for reasons not attributable to Ice Tourism ehf and if it is not possible to replace them with other equivalent ones, gives the customer the right to be reimbursed for the difference between the price of the planned services and those actually provided.

REFUNDS IN CASE OF CANCELLATION BY THE CLIENT

Refunds in case of cancellation by the client or the agency that contracts our services follow the following:

Individuals:

- a) Cancellation up to 1 month before the arrival date:
 - Refund of the entire deposit (only the reservation fee would be charged = 10 euros/PAX).
- b) Cancellation between 15 days and 1 month before the arrival date:
 - Return of 20% of the advance/signal.
- c) Cancellation between 10 days and 14 days before the arrival date:
 - Return of 10% of the advance/signal.
- d) Cancellation between 3 and 9 days before the arrival date:
 - Return of 50% of the total value of the package.
- e) Cancellation with less than 3 days before the arrival date:
 - Non refundable.

Groups (8 or more persons):

- a) Cancellation up to 3 months before arrival date:
 - Full refund of the deposit (only the reservation fee would be charged = 10 euros/PAX).
- b) Cancellation between 61 and 90 days before the arrival date:
 - Return of 50% of the advance/signal.
- c) Cancellation between 31 and 60 days before the arrival date:
 - No refund of the deposit/advance/signal.
- d) Cancellation between 15 and 30 days before the arrival date:
 - Return of 40% of the total value of the package.
- e) Cancellation with less than 15 days before the arrival date:
 - Non refundable.

CLAIMS

Only complaints submitted in writing to Ice Tourism ehf and within no more than 20 days after the services have been provided may be considered. They can only be accepted if they have been reported to the service providers (hotels, guides, etc.) during the course of the trip or stay, requiring the respective documents proving the occurrence. The right to make claims for price reduction or compensation for non-conformity of travel services included in the package shall expire within 2 years.



Síoumúli 29 – 108 Reykjavík (Iceland)
00 354 5888900 • 00 354 6973085
icetourism@icetourism.com

Av. do Lídador da Maia 506 Room – 4, Maia (Portugal)
00 351 914 714 834 • ivo@icetourism.com

Boezingestraat 80-8920 Langemark, Poelkapelle (Belgium)
00 32 456236980 • frank@icetourism.com

www.icetourism.com
icetourism@icetourism.com
instagram.com/icetourism
facebook.com/icetourism.islandia
+354 6973085 • + 354 5888900

Catalog Design by:



Ice Tourism Representatives:

